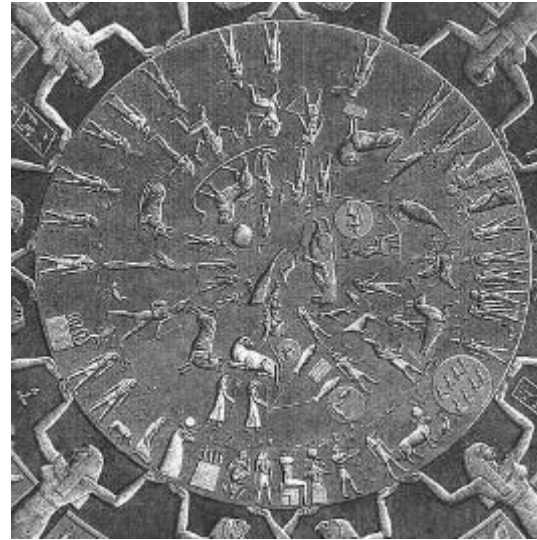


Classical images – Egyptian

Cancer



Zodiac tomb, Anthribis
cf. Flinders Petrie, *Anthribis*, 1908, pl. xxxviii

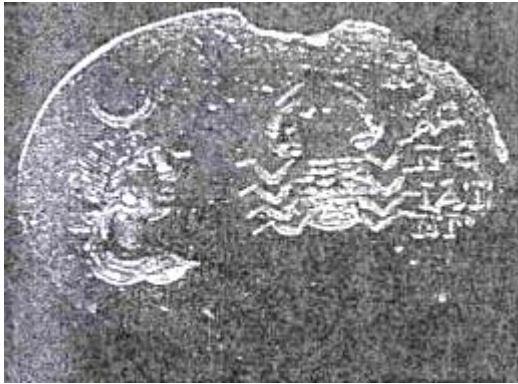


Denderah ceiling
Paris, Louvre



Classical images – Greek

Cancer



Cancer with Selene
green and brown jasper
Paris, Cabinet des Médailles



Silver tetradrachm from Cos
c. 300-190



Krater from Vulci,
Dikaios painter, c. 500 BC
London, BM (E 255)



Silver coin from Agrigentum (Sicily) with
crab above Scylla (n.b. dogs), 5th C BC
Amsterdam, Allard Pierson Museum.
© Barbara McManus, 2003



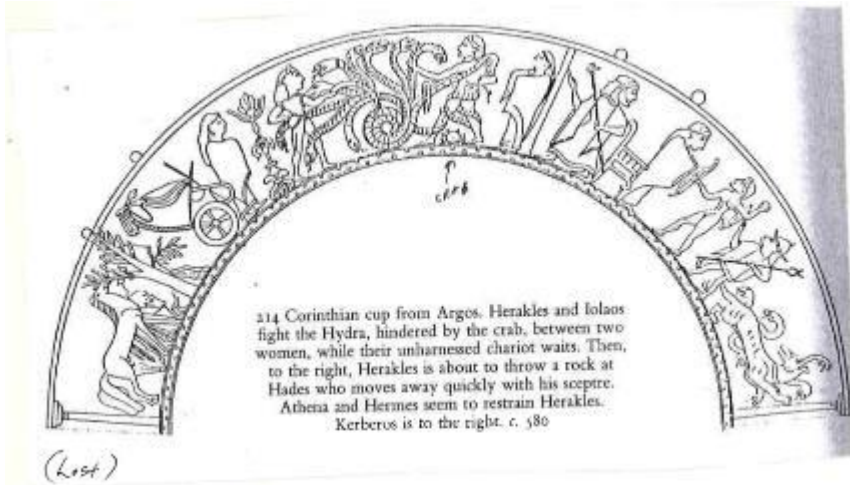
Scylla and Cancer
Silver tetradrachm from Acragas
c. 420



Attic Calendar
3rd – 2nd C BC
Athens, Hagios Eleftherios

Classical images - Greek (Hercules with the Crab)

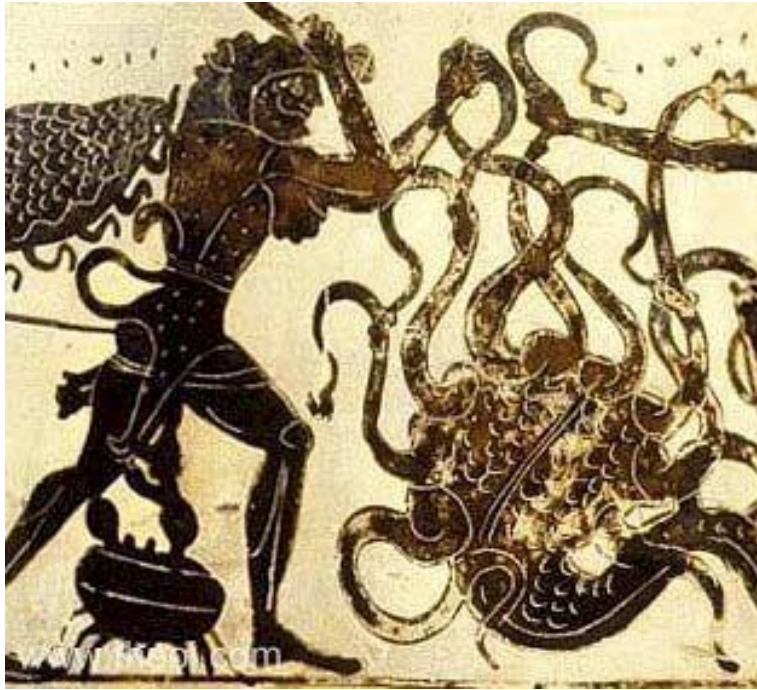
Cancer



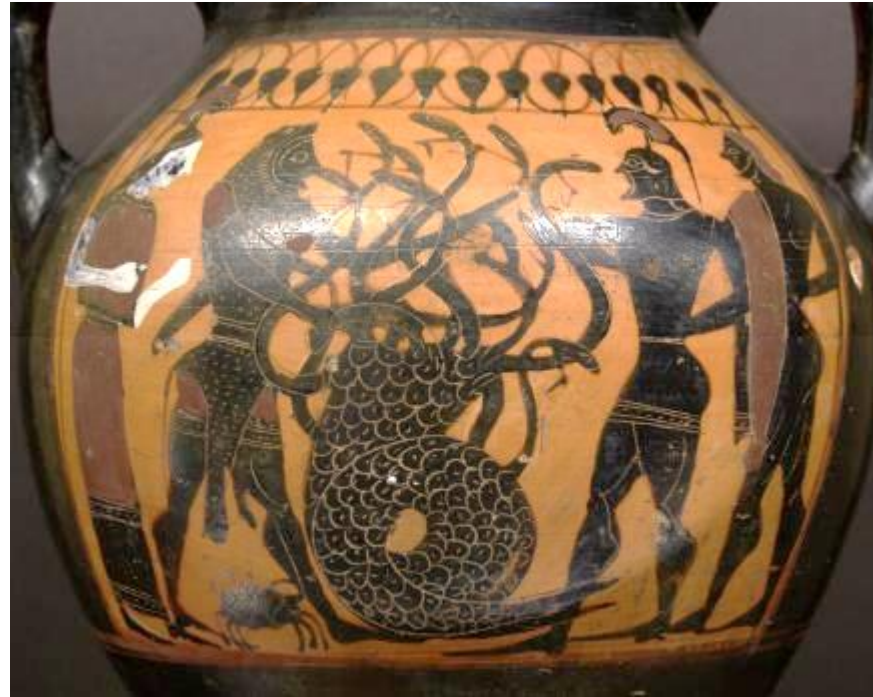
178 Boeotian bronze fibula plate. Herakles and the Hydra. Two warriors with swords struggle with a many-headed monster. The presence of the crab confirms the identification of Herakles and Iolaos fighting the Hydra. End of the 8th Century. 14 cm



Hercules with the Hydra, with Iolaos (Hercules being bitten by a crab)
Caeretan hydria (Etruria)
attrib to the Eagle Painter, c. 530 BC
Malibu, J Paul Getty Museum
credit: Getty Open Content Program



Hercules and the Hydra with Crab
Athenian black-figure lekythos
5th C BC
Paris, Louvre
cf: www.theoi.com



Hercules and the Hydra with Crab
c. 540-530 BC, attrib Princeton Master
Paris, Louvre (CA 731)
cf: Wikimedia

Classical images – Roman

Cancer

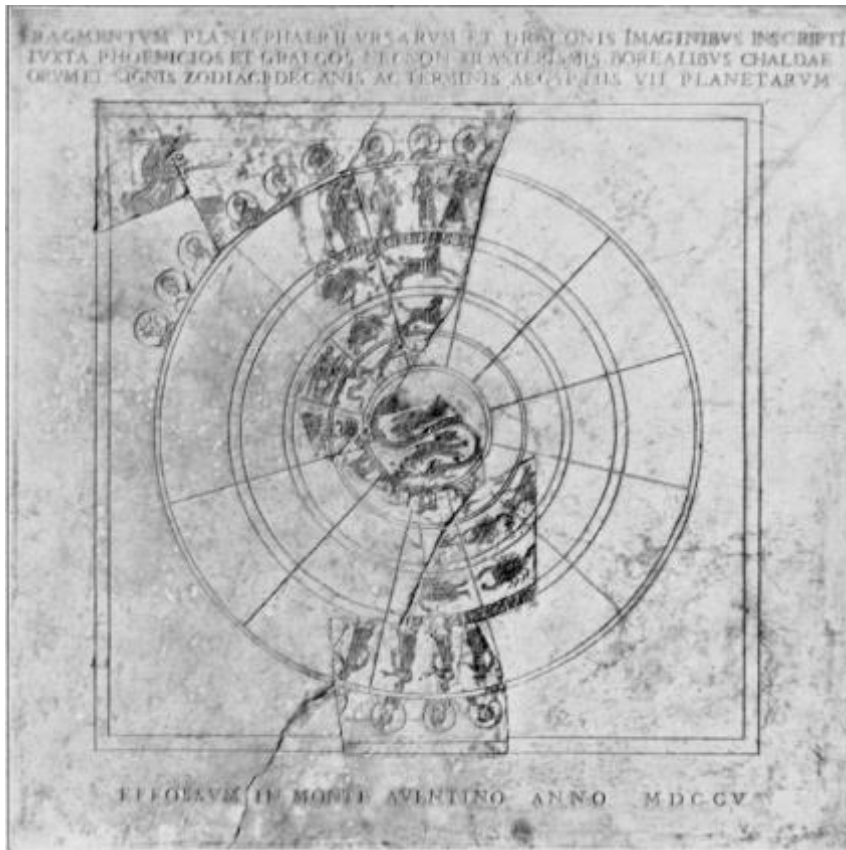


Carnelian
Roman, 1st C AD



Selene and Endymion
sarcophagus, c. 180 AD
female riding a crab in central section
Munich, Glyptothek,
cf: Wikimedia





Bianchini planisphere
Roman, 2nd C
Paris, Louvre

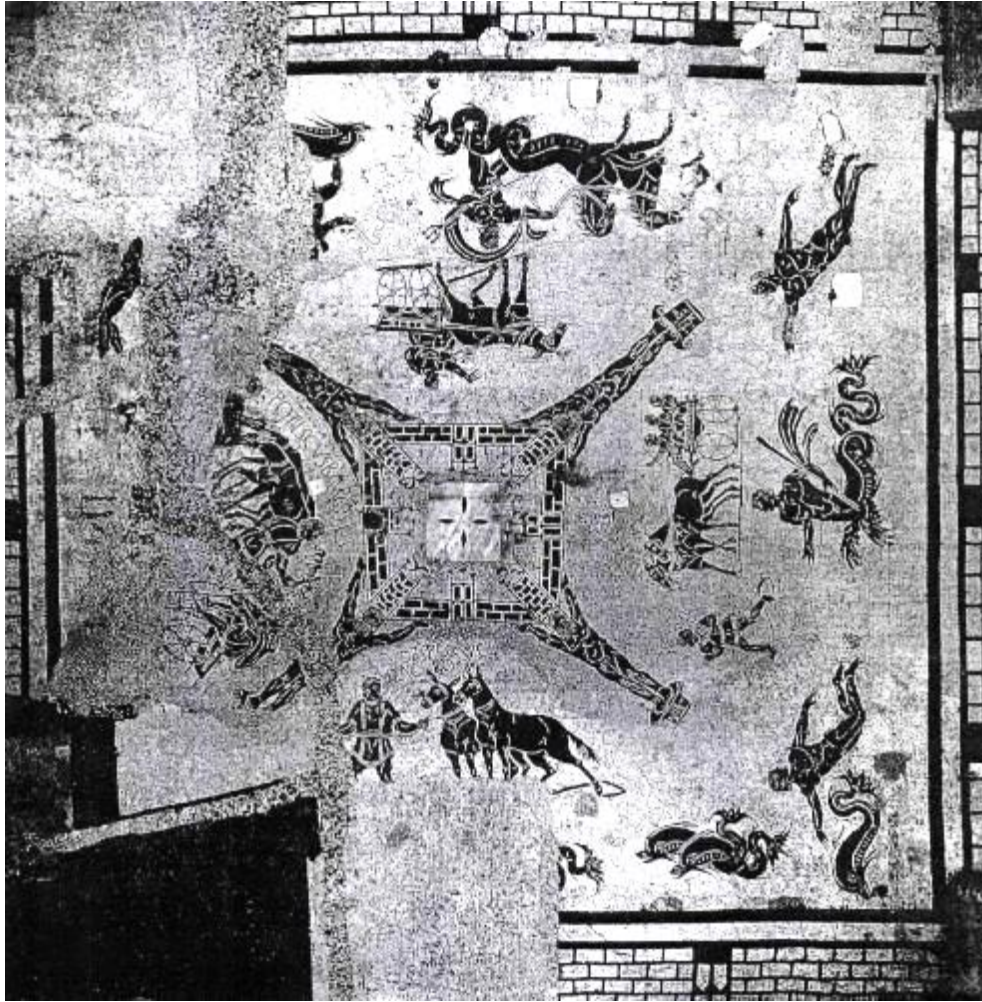


Floor mosaic (caldarium)
c. 40-20 BC
Pompeii, House of Menander
cf: Wikimedia



Floor mosaic,
4th C AD
Aquileia, Basilica

Classical images - Asini



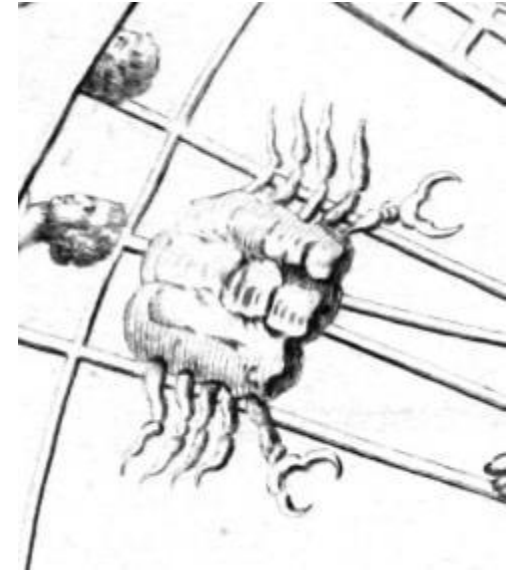
Bath of the Cart Drivers (Cisiarii)
mosaic pavement, 126 AD
Ostia Antica
cf. Ling, pp. 44-46

Cancer



Classical globes

Cancer



Naples, Farnese Atlas

faces right

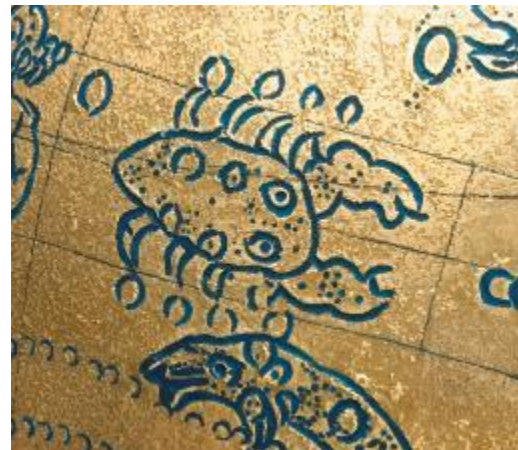
© Petr Hadrava

Bentley's Manilius



Paris, Kugel Globe

faces left



Mainz globe

n.b. – faces right, stars on back and on legs



drawing © Kunzl

Germanicus mss

Cancer

l. = z stemma



Leiden, Univbibl
Voss lat 4° 79
n.b. – placed vertically



Boulogne-sur-Mer, Bibl. Mun.
Ms 188
same



Bern, Burgerbibl,
Ms 88
n.b. – two spots = shading or Asini?



vs. planisphere



vs. planisphere



vs. planisphere

Germanicus mss

II and III. = O stemma (O¹ or v)

II.



Basle, OBU
Ms AN.IV . 18
n.b. – horizontal, with Gemini



vs. planisphere

III.



Aberystwyth, NLW
Ms 735 C
n.b. – vertical, with Gemini

Cancer



vs. hemisphere
Asini



vs. rota
Asini



vs. planisphere
Asini



vs. schema

Germanicus mss

IV. = O stemma (O² or μ)



Madrid, Bib nac
 Ms 19 (16)
 n.b. – horizontal, faces left towards Gemini,

Cancer

Va. = O stemma (O² or μ = Siciliensis)



Cologne, Bib Bodmer
 Cod lat 7
 n.b. – NO Cancer



NY, Pierpont Morgan Libr
 Ms M 389
 n.b. – horizontal crayfish behind Gem

Vb.



Vatican, BAV
 Barb lat 76
 n.b. – horizontal crayfish in front of Gem

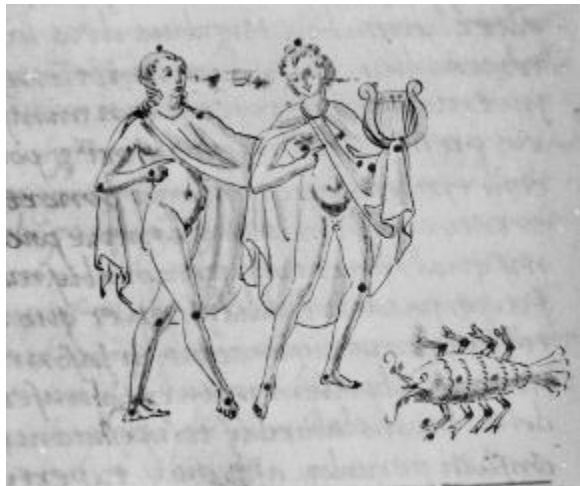
VI.



London BL
Egerton 1050

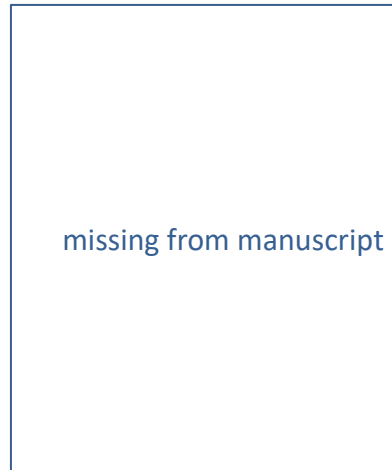
n.b. – horizontal crayfish, in front of Gem

VII.



London, BL,
Add Ms 15819

n.b. – horizontal crayfish, in front of Gem



= fragmentum ... repertum in Sicilia

Naples, Bib naz
XIV D 37

Germanicus mss (= 'Siciliensis')

Cancer

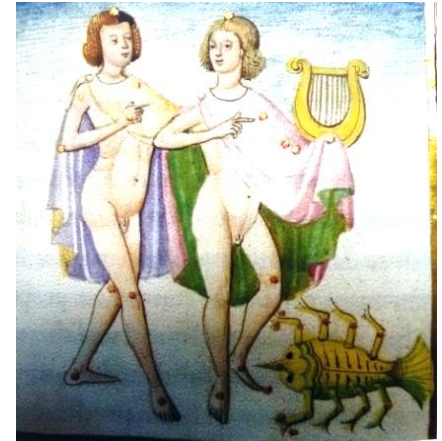
VIIIa.



Madrid Bib Nac
Ms 8282
n.b. — horizontal crayfish, in front



Vatican, BAV
Barb lat 77
same



Vienna, Schottenstift
Ms 51
same

VIIIb.

VIIIc .

IX.



Vatican, BAV
Urb lat 1358
n.b. — round, horizontal, in front



Florence, Bibl Laurenziana
Plut 89 sup 43
n.b. — horizontal crayfish, in front

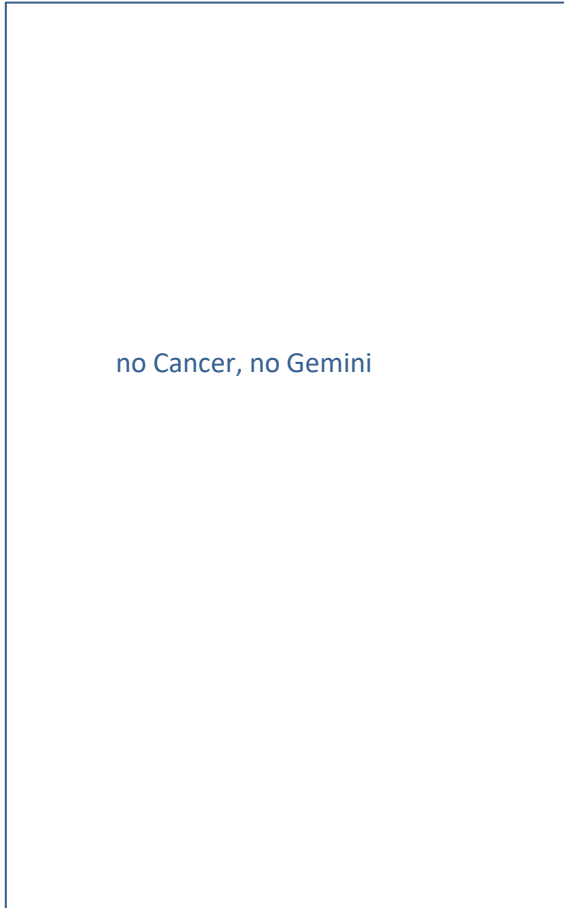


missing (not with Gemini)

Montpellier
Ms H 452

Ps-Eratosthenes

Cancer

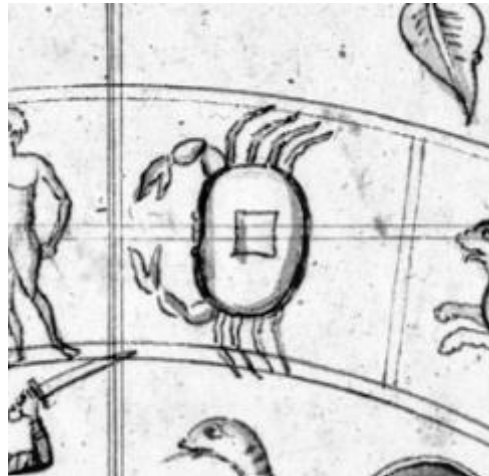


no Cancer, no Gemini

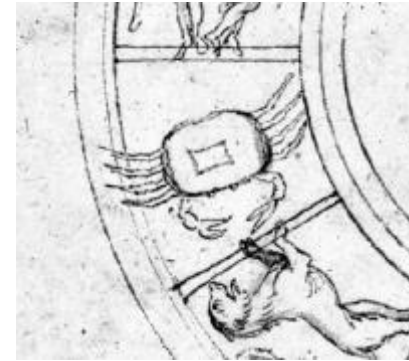
Vatican BAV,
Vat grec 1087



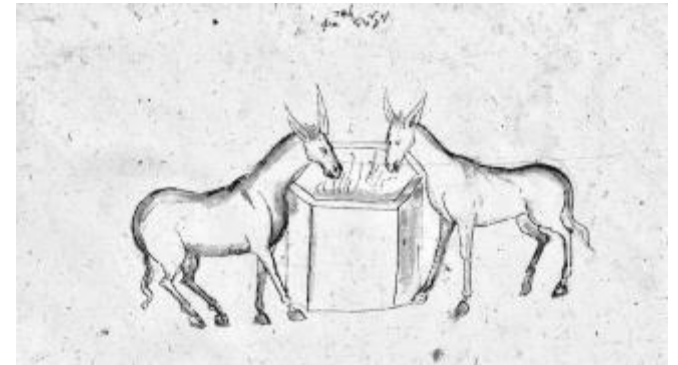
planisphere



Hemisphere
with Praesepe on back



zodiac rota with Praesepe on back



Asini / Praesepe

Cicero

image missing from manuscript

London, BL
Harley 647



London, BL
Harley 647 – planisphere

Cancer

image missing from manuscript

London, BL
Harley 2506

image missing from manuscript

London, BL
Cotton ms Tib B.V., pars 1

image missing from manuscript

London, BL
Cotton Ms Tib C. 1

Image missing from manuscript

Gottweig,
Stiftsbibl Ms 7

I.



Dresden, Landesbibl.
Ms D C 183



Paris BN
Lat 12957 - strong arms



Prague, Univbibl
Ms 1717



Dresden hemisphere



Paris hemisphere



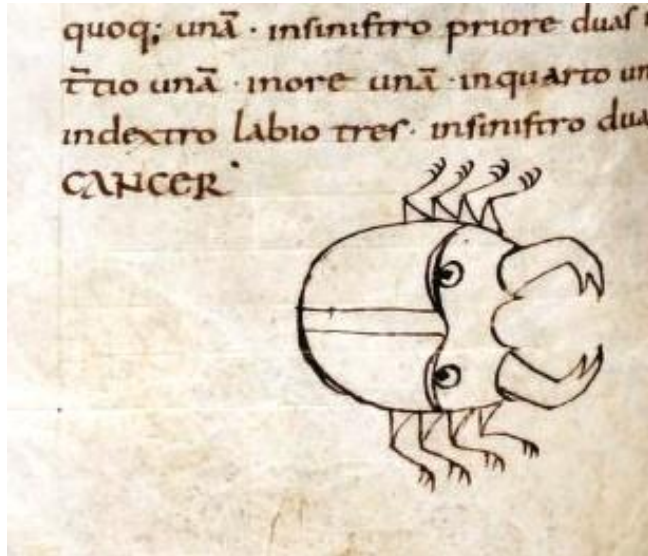
Dresden zodiac



Paris zodiac



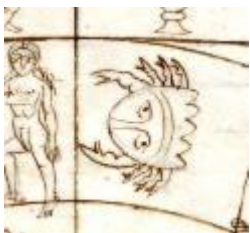
1a.



St Gallen, Stiftsbibl
Ms 902
n.b. – to right



St Gallen, Stiftsbibl
Ms 250
same



hemisphere



rota



hemisphere
n.b. – tail added



rota

Ib.



Gottweig, Stiftsbibl.
Ms 7 (146)



on hemisphere



Siena, Bib com
Ms L. IV. 25



on hemisphere

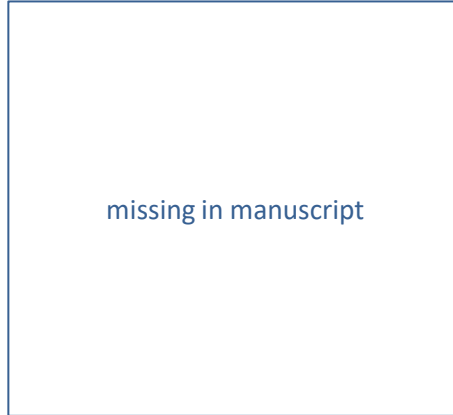
Revised Aratus Latinus

Cancer

I. (distant relative)



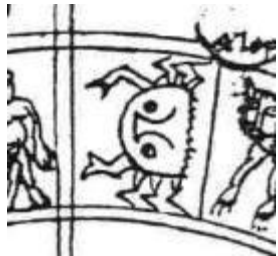
Paris BN
n.a. 1614
n.b. – faces left, scalloped tail



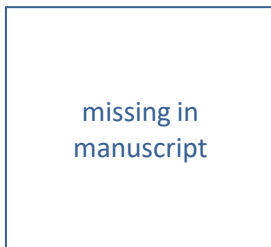
Munich, Staatsbibl.
Clm 560



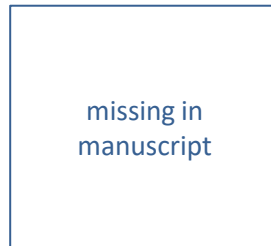
Vatican, BAV
Reg lat 1324
faces right, round body



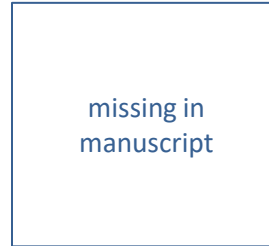
hemisphere



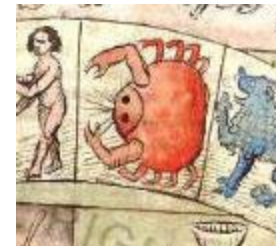
rota



hemisphere



rota

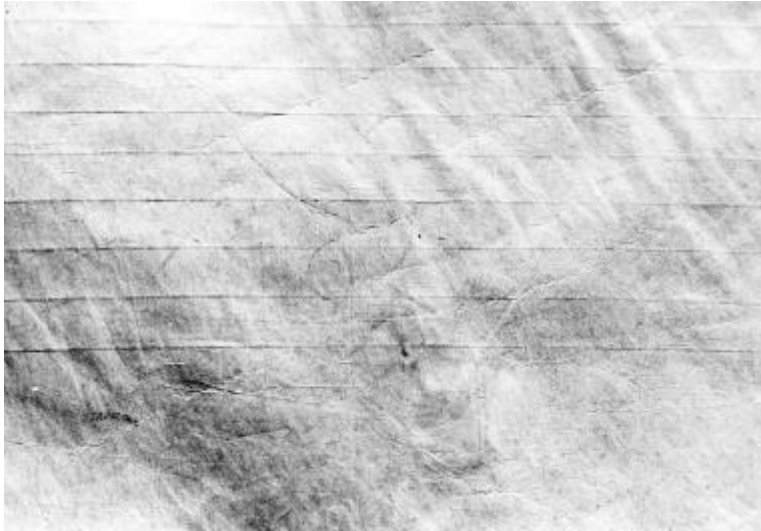


hemisphere



rota

II.



Cologne, Dombibliothek

Ms 83.11

n.b. – underdrawing only; large human arms to the right and 8 legs

1a.



Dijon
Bib mun, Ms 488 (excerpt)
vertical



(full text)
crayfish to right

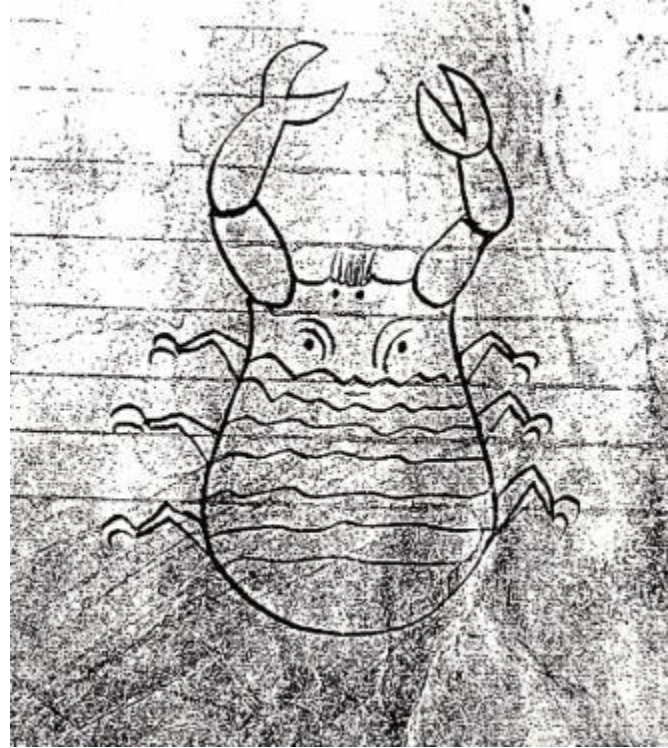


zodiac rota
crayfish to right

Ila.



Paris, BN
Lat 5543
n.b. – vertical, round body



Paris, BN
Lat 5239
vertical, strong arms

11b.



Klosterneuburg,
Stiftskirche, Ms 685
n.b. – with Gemini, vertical (crayfish)



Zwettl, Stiftskirche
Ms 296
n.b. – same (crayfish)



Vatican, BAV
Vat lat 643
n.b. – same (crab)



zodiac rota



zodiac rota

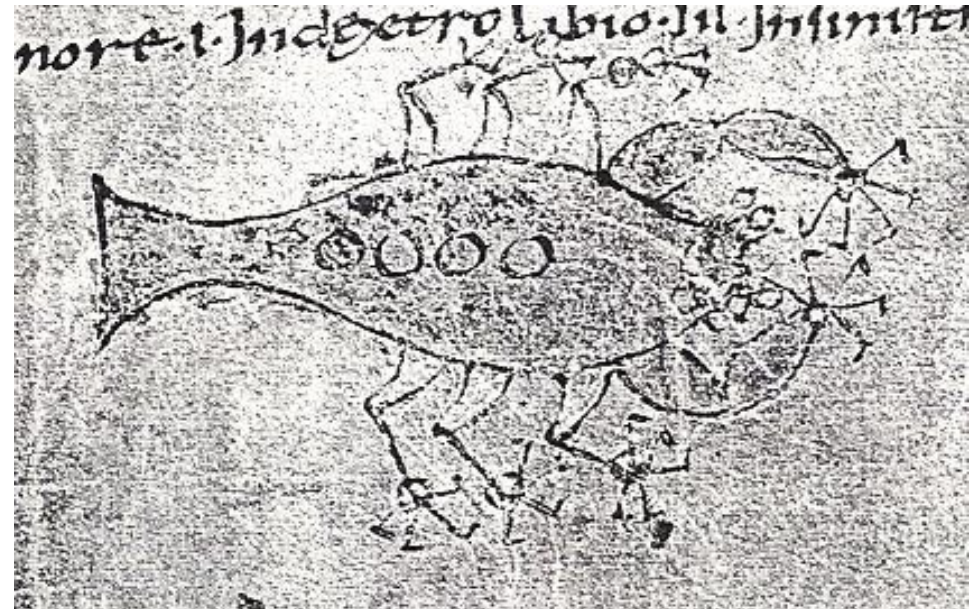


zodiac rota

III.

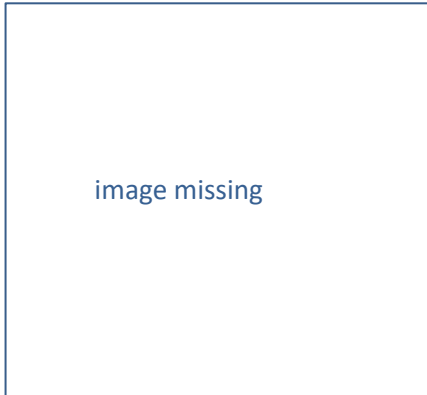


Laon,
Bib. mun., Ms 422
n.b. – to right



Rouen, Bib. mun.,
Ms 26
to right, with fish tail

Singletons



Amiens
Bib mun, Ms 222



Durham, Cathedral Libr
Hunter 100
calendar only



Freiburg-im-Bresgau
Ms 35

1a.



Berlin, Staatsbibl,
 Ms lat 130 (Phill 1832)
 n.b. – faces right, with Asini

Berlin planisphere



Madrid, Bib Nac
 Ms 3307
 same



Monza, Bib capit
 Ms F. 9/176 (246)
 same

Ib.



Vatican BAV,
Vat lat 645

n.b. — faces right, with Asini

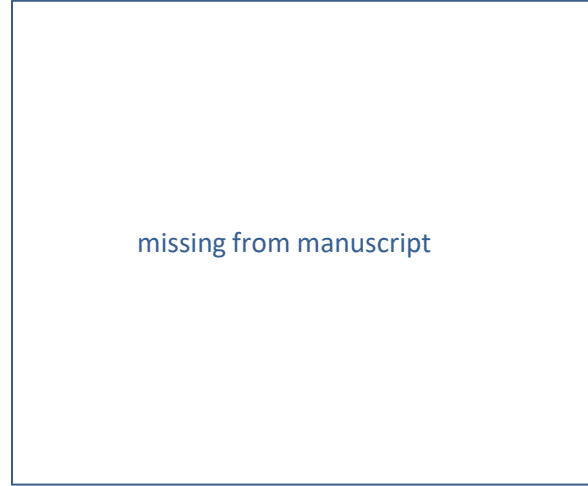
II.



Munich, Staatsbibl. Ms clm 210
n.b. – faces left



planisphere



Vienna, ONB
Vindob 387



rota

V.



Los Angeles, Getty Mus
Ludwig XII, 5
n.b. – Asini on shell



Paris BN,
lat 8663
n.b. – Asini on shell

Singletons



Vienna, ONB
Vindob 12600
n.b. – crayfish



Reykjavik
Ms 1812
n.b. – with Asini below

Hyginus

Ic. (singleton)



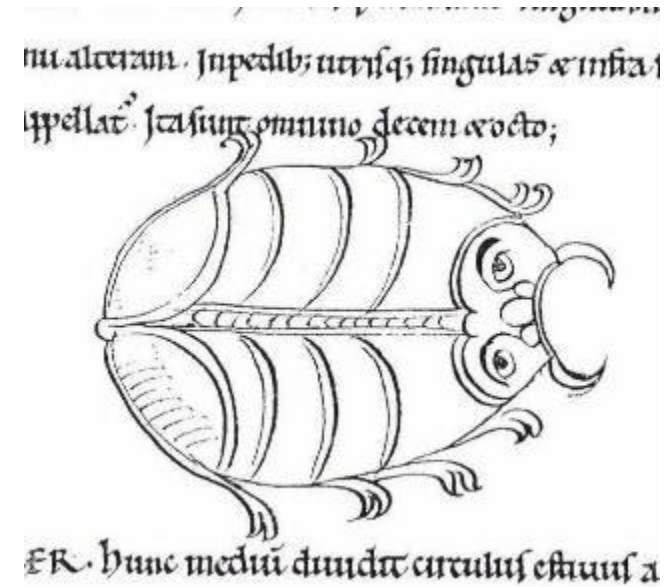
Vienna ONB

Vindob 51

n.b. – crayfish to right, with face

Cancer

II. (singleton)



Leiden Univ-bibl

Voss lat 4° 92

Hyginus

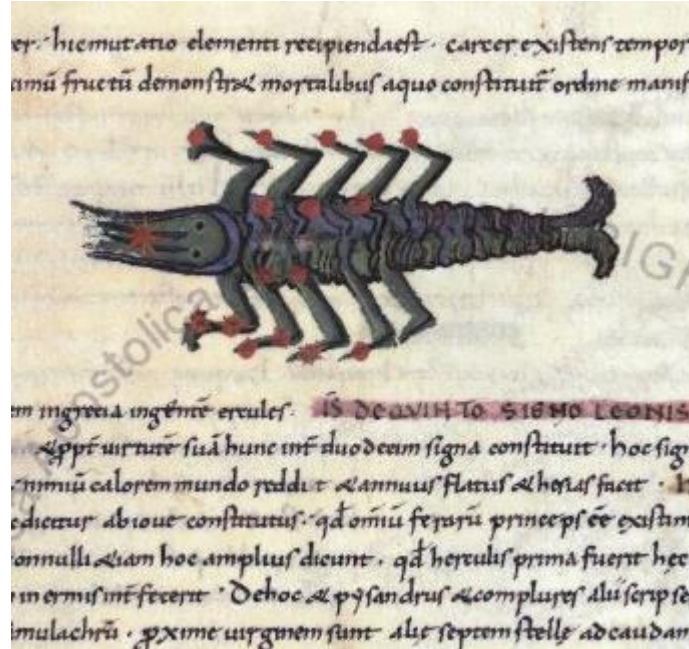
III.



Leiden Univ-bibl
Voss lat 8° 15

n.b. – vertical, with Gemini, see ps-Bede, Paris BN lat 5543

Cancer



Vatican BAV
Reg lat 123

n.b. – crayfish to left



vs planisphere

IV.



Oxford, Bodleian Libr
Bodley 614
n.b. – to right with face



Oxford, Bodleian Libr
Digby 83 (SC 1684)
same

V. (singleton)



Baltimore, Walters Art Gallery
 Ms 734
 n.b. – crayfish to right



separate Asini with manger

Hyginus

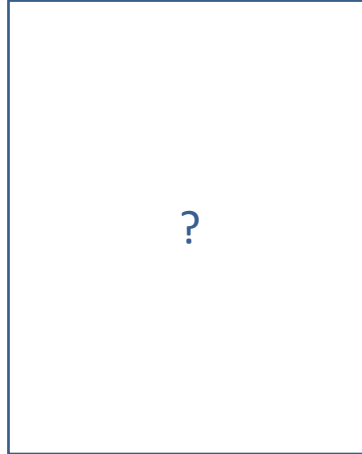
Cancer

VI. (singleton)

VI- related: German Star Books ('secundum Hyginum')



Berlin, Staatsbibl.
Ms 8° 44 (Rose 962)
n.b. – crayfish, with Asini and
'praesepe asellorum' label



Lyon, Bib mun, Pal des
Arts 45



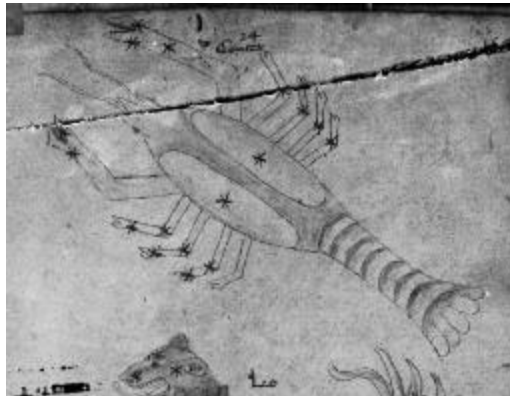
Lyon, Bib mun
Ms 172
to right, lions on shell (!)



Munich, Staatsbibl
Germ 595
to left



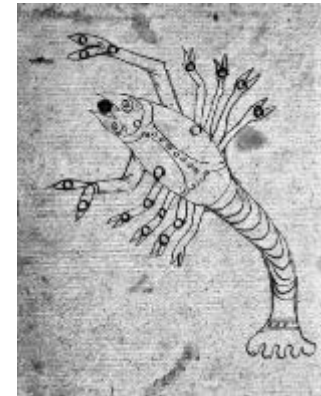
Munich, Staatsbibl
CIm 59
To right, with Asini



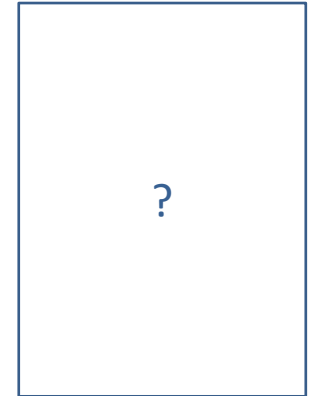
Vatican BAV
Pal.lat. 1369
left



zodiac signs with planet gods



Vatican BAV
Pal.lat. 1389
left

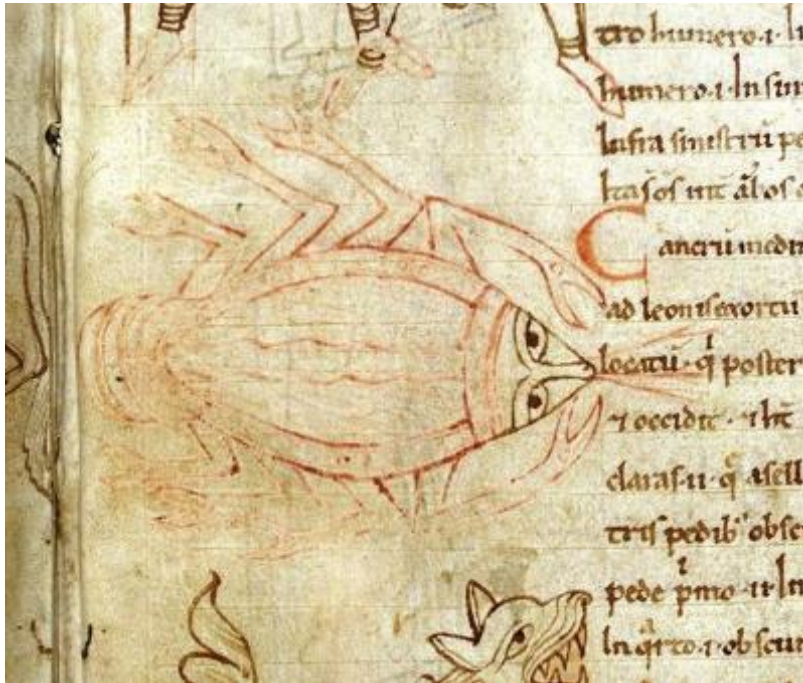


Wolfenbüttel Herz Aug
Guelf 81 24 Aug 10

Hyginus

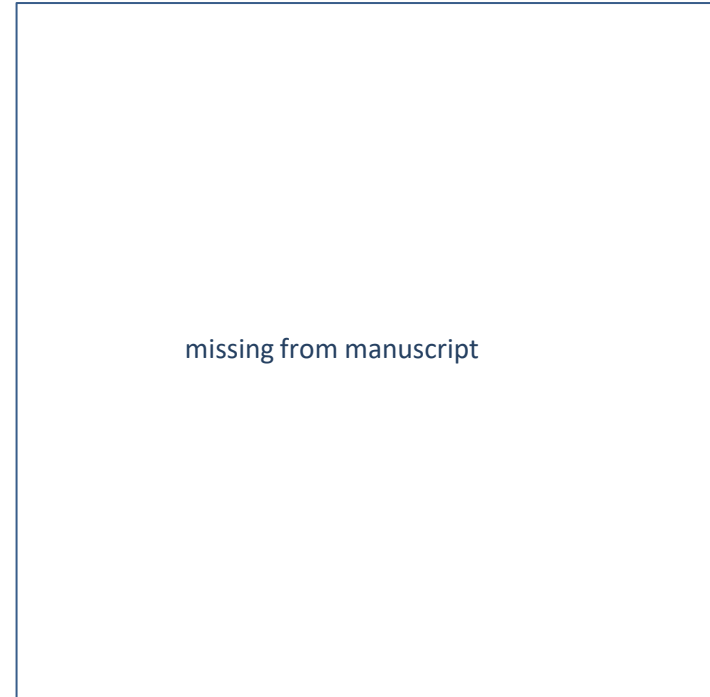
Cancer

VII. (singleton)



London BL,
Roy Ms 13. A. XI
n.b. – to right with face

VIII. (singleton)

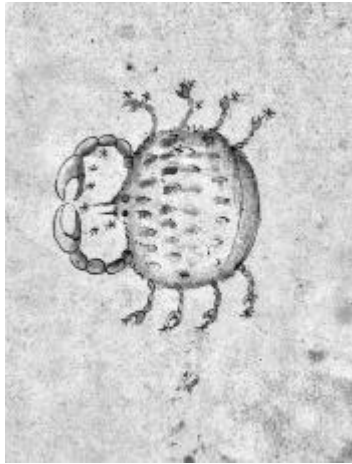


Munich, Staatsbibl.
CIm 10270

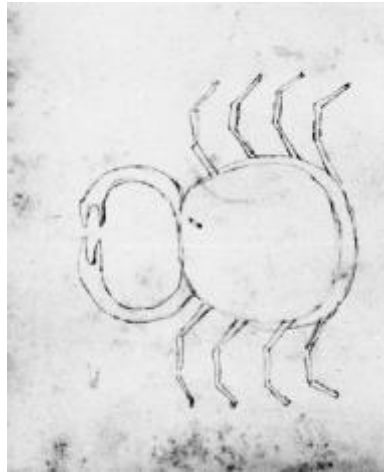
Hyginus

IXa.

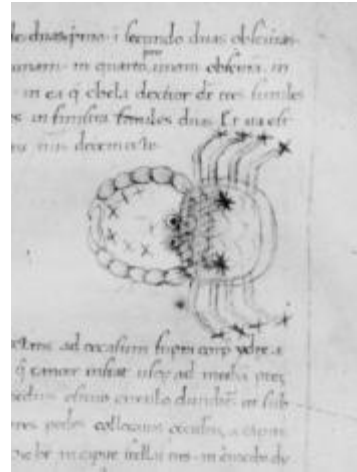
Cancer



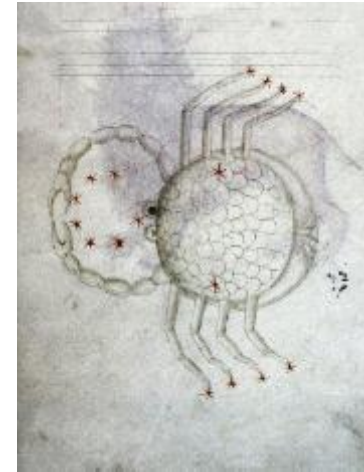
Cambridge, Fitzwilliam M
Ms 260
n.b. – to left with crescent
on bottom



Florence, BN
Magl XI. 141
same



Milan, Bibl. Ambrosiana
T. 47 sup
crescent



Oxford, Bodleian Libr
Can. class lat 179
crescent



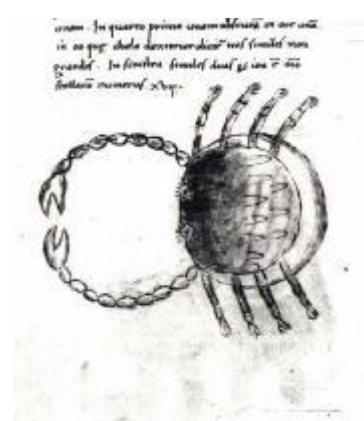
Siena, Bib com
Ms L. VI. 25
to left, crayfish



Vatican, BAV
Vat lat 3109

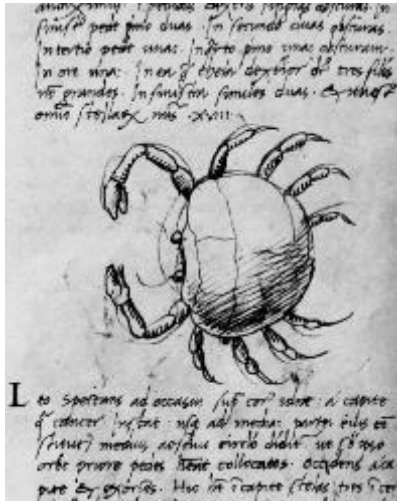


Vatican, BAV
Vat lat 3109
n.b. – sun rays from tail ?

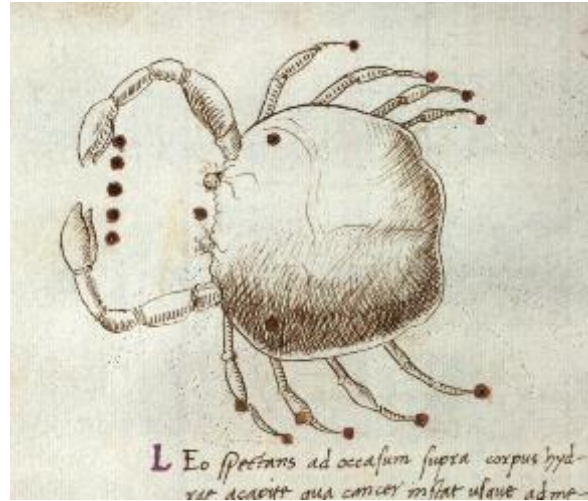


Verona, Bibl capitolare
Ms CCLXI
crescent

IXb.



Oxford, Bodleian Library
Can misc 46
n.b. – to left

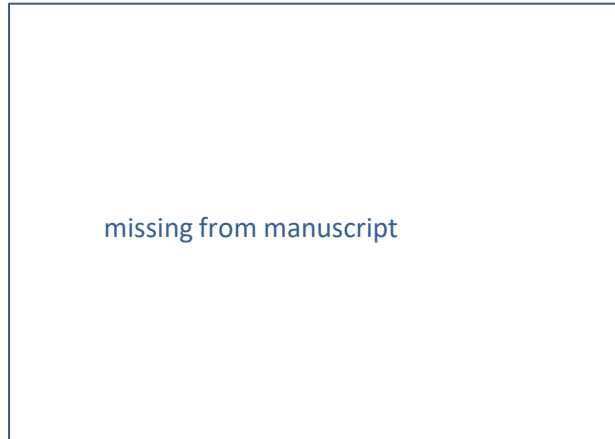


Milan, Bibl Trivulziana
N. 690 (E 83)
same

IXc.



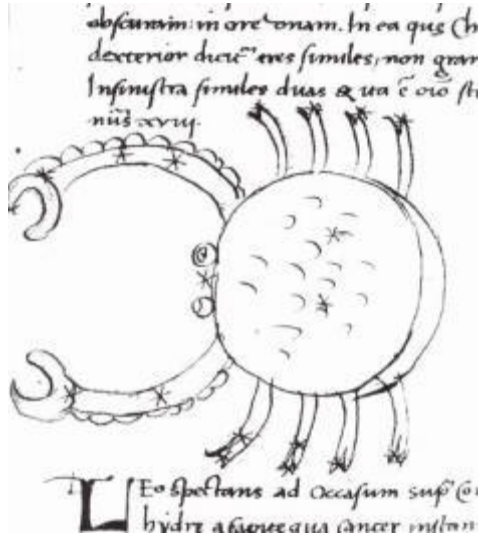
Vatican, BAV
Vat lat 3110



Florence, Bib Naz
Magl XI. 114,1

Hyginus

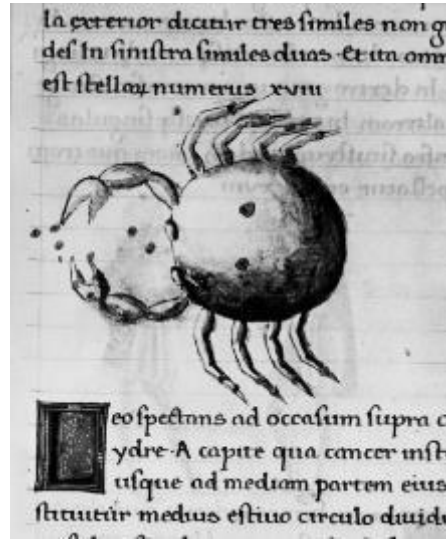
IXd. (distant singleton)



Florence, Bibl Laurenziana
Ashburnam 1148
n.b. – to left, crescent

Cancer

IXe.



Pavia, Bibl Univ
Aldini 490



Vatican., BAV
Urb lat 1358

Hyginus

Cancer

IXf.

unam obscuram: In ore unam: In ea qui
la dexterioz dicitur tres similes non par
sinistra similes duas & ita est omnino si
numerus decem & octo.



New York, Public Library
Spencer Ms 28
n.b. -- vertical



Etans ad occasum supra caput hys
cancer instat usq; ad mediam p
utis medius astivo circulo divid
orbe oriaris pedes habeat collu

Freiburg, Andreas-Möller-Bibl
Cl XI 4o 9
same

IXg.



unc medium dividit circulus et

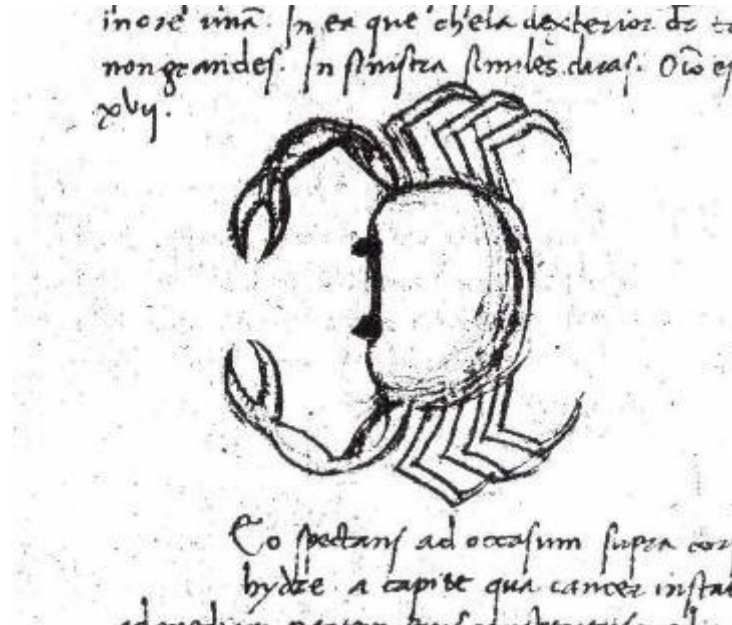
Florence, Bib Naz
Plut 89, sup 43
to right

X. (singleton)

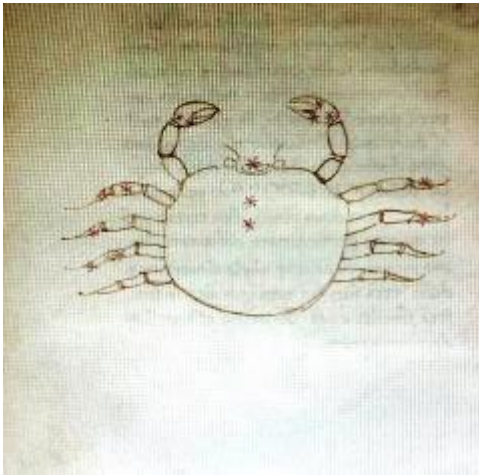


Vatican, BAV
Chigi H. IV. 20

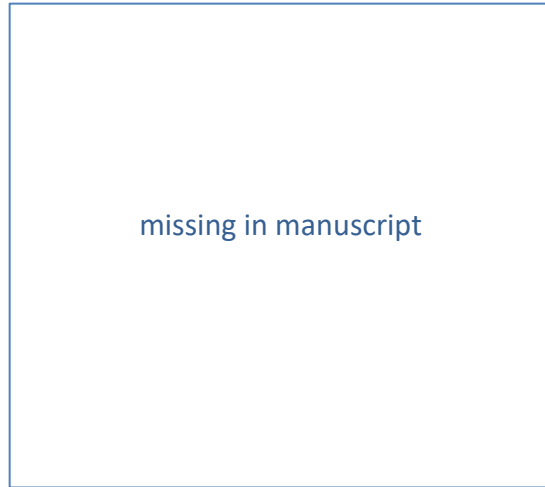
XI. (singleton)



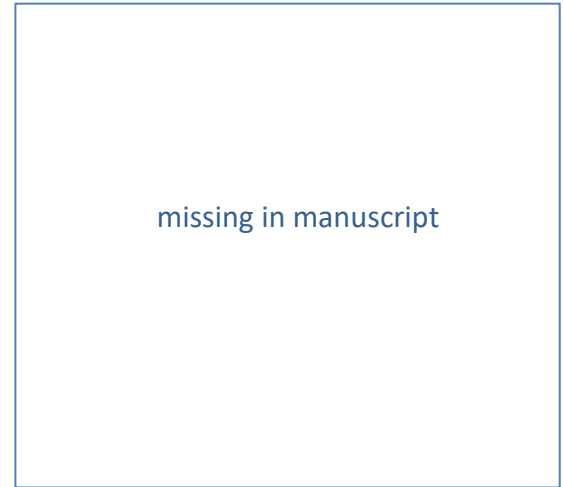
Cortona, Lib del
Comune
Ms 184 (256)
to left



Cambrai, Bibl. Mun
Mss 933 (832)
vertical



Cambridge, Trinity College
Ms R 15 32

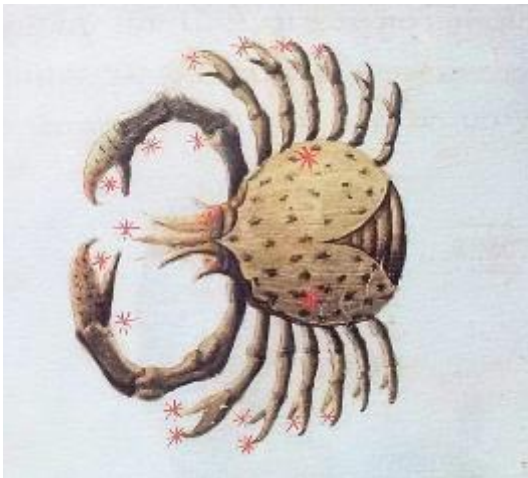


Leiden, Univ-bibl.
Gronovius 21

Basinio da Parma

Cancer

Ia.



Rimini, Cassa di Risparmio
London Sotheby's sale 1992
to left, pointed snout

Ib.

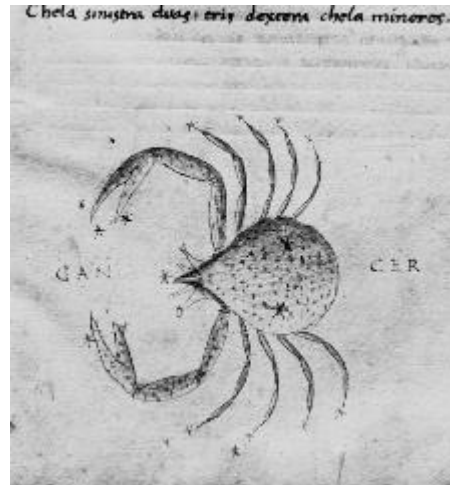


Cambridge, CUL
Dd IV 64
same

Ila.



Oxford, Bodleian Libr
Bodley 646
same

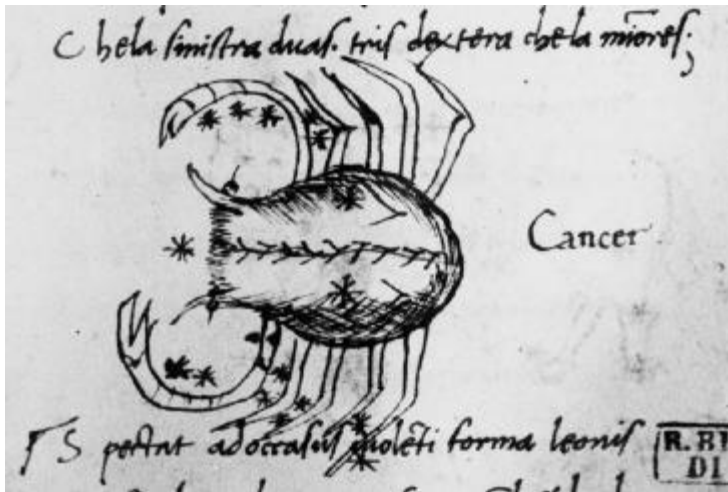


Parma, Bib Palatina,
Parm 1008
same

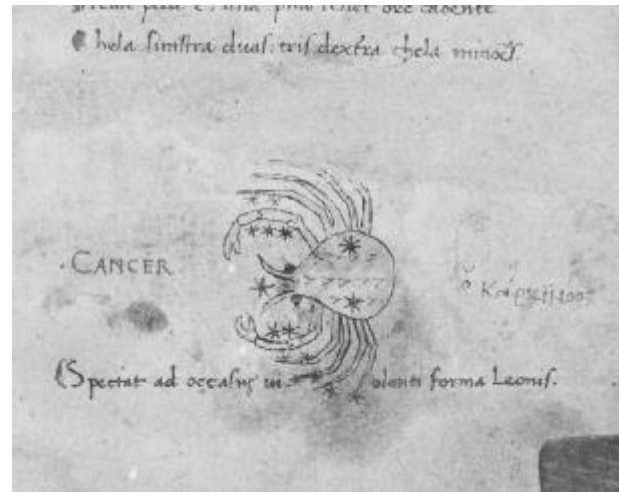


Venice, Bibl Marciana
XII, 194 (4148)
vertical

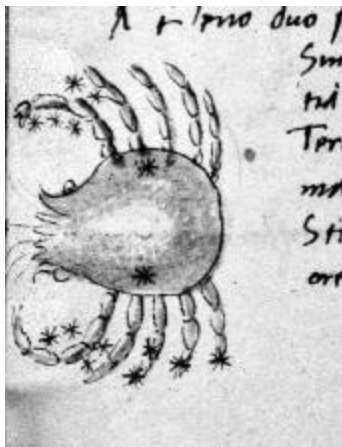
Ilb.



Parma, Bibl Palatina
 Parm 27
 similar



Rome Bibl Casanatense
 Ms 4059
 same



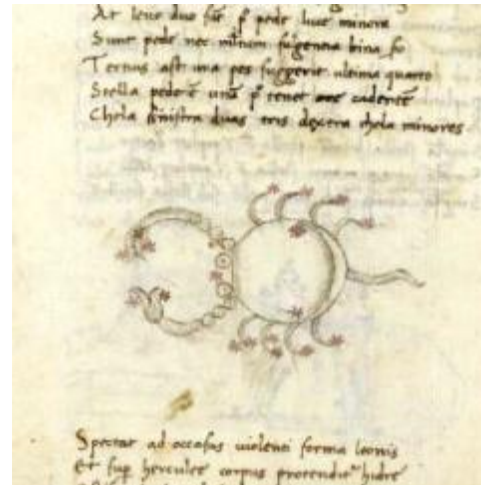
Munich, BSB
 Clm 15743
 same

III.



Bologna, Bibl Com
Ms 173
n.b. – crayfish to left

IV.



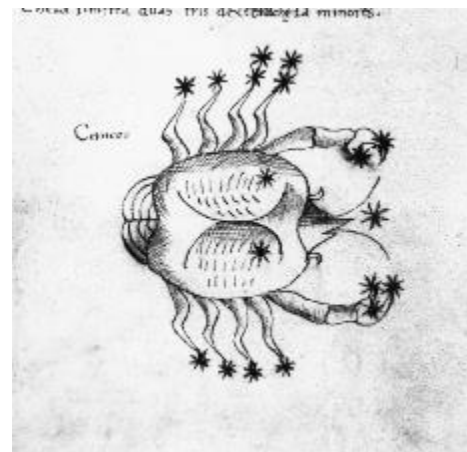
London, Wellcome Coll
WMS 122 –
n.b. – to left, crescent, with tail (!)

V.

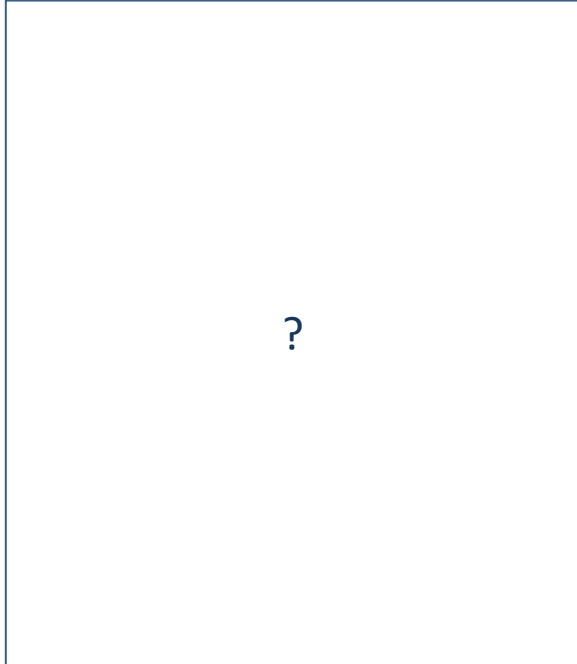


Ravenna, Bib Classense
Ms 120

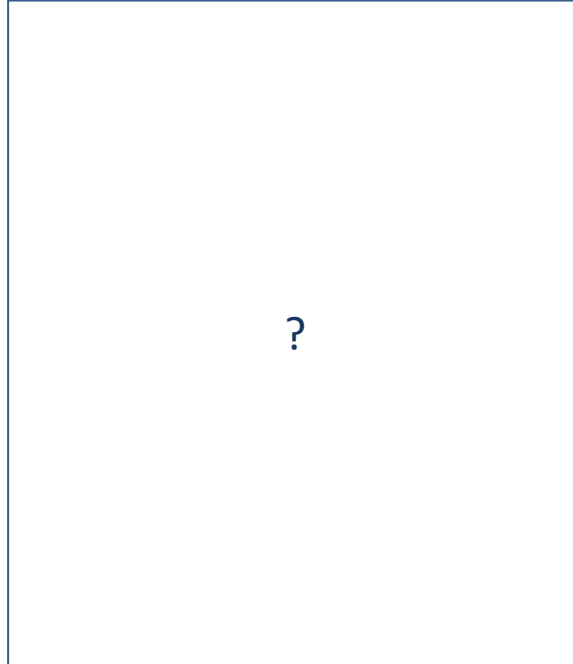
VI.



Florence, Bibl Marucelliana
Ms C. CCLI
to right, cf. Hyginus, Ratdolt 1482



Krakow, Rps BJ 3706

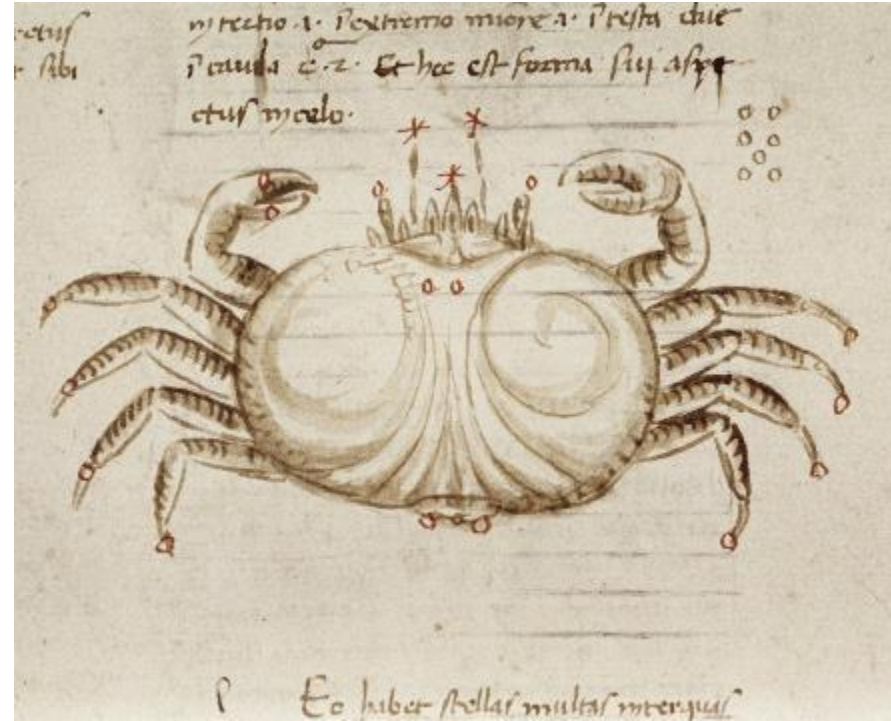


Padua, Bibl. Universitaria

N Italian Group – Ia.

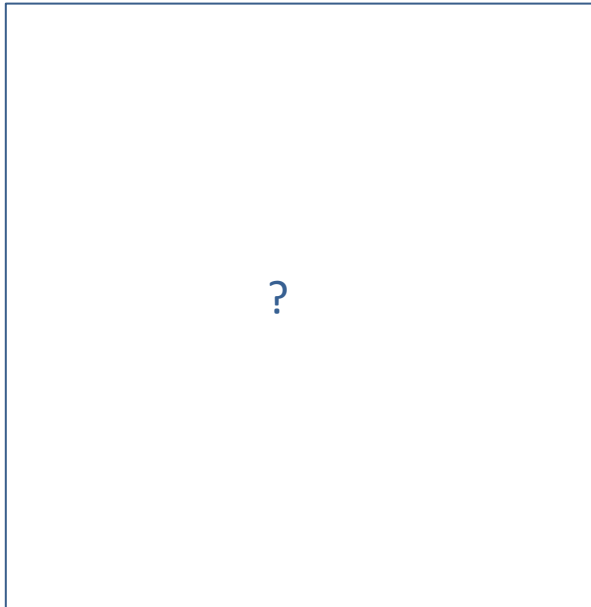


Munich, Staatsbibl
CIm 10268
n.b. – vertical

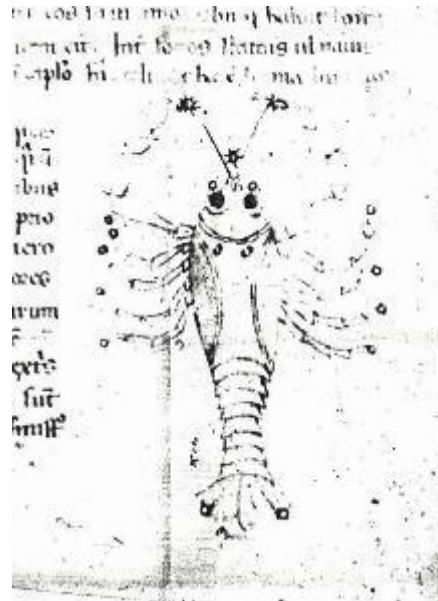


Oxford, Bodleian Libr
Bodley Ms 266
same

N Italian Group – Ib.

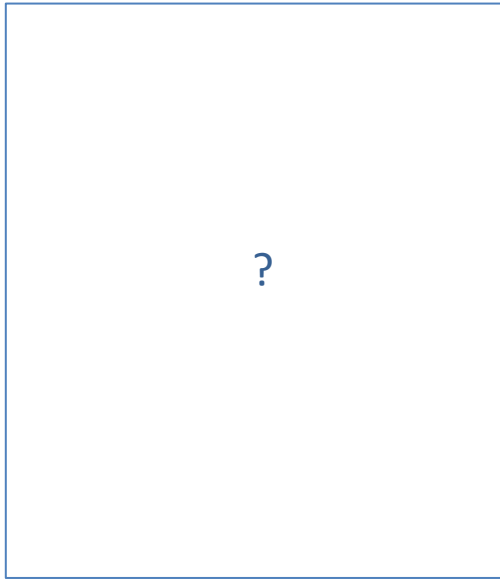


Vatican, BAV
Vat lat 4087



St Petersburg, Nat Libr
Ms lat F V IX, no. 1
n.b. – vertical crayfish

N Italian Group – Ic.



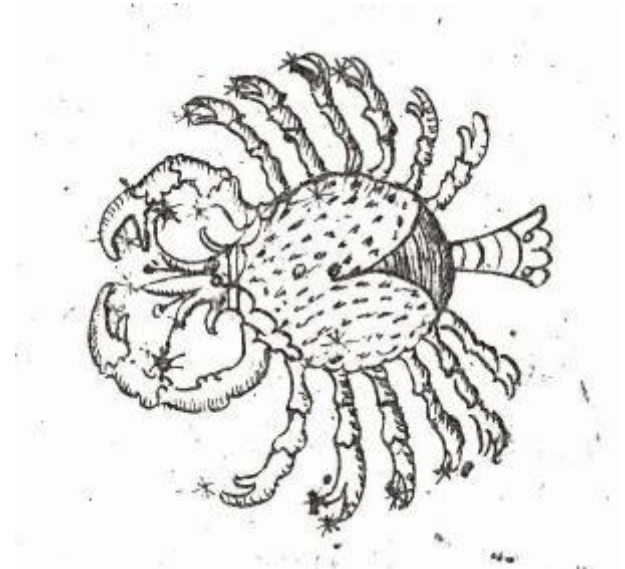
Warsaw, BN,
Baw T

N Italian Group – Id.



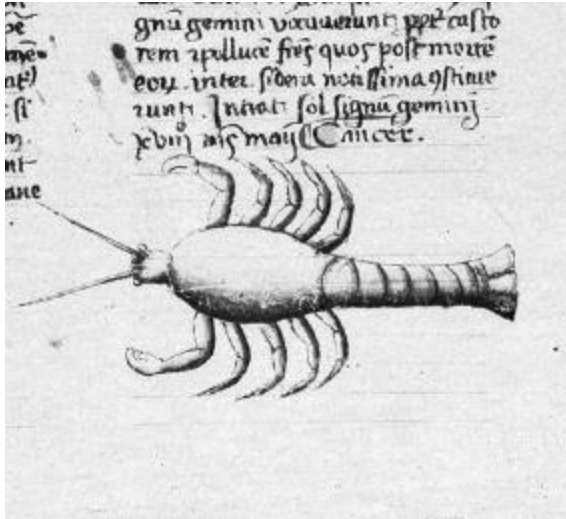
Vienna, ONB
Vindob 3394
to right

N Italian Group – Ie.



Padua, Bibl Seminario
Cod. 48
to left with tail

Venetian Group – IIa.



London BL
Add 41600
n.b. – crayfish to left



London, Wellcome Coll
Ms 509
vertical

Venetian Group – IIb.



Milan, Ambrosiana
Ms I 90 sup
crayfish to right

Bohemian Group – IIIa.



Vienna, ONB
Vindob 2352
n.b. – vertical, prominent eyes



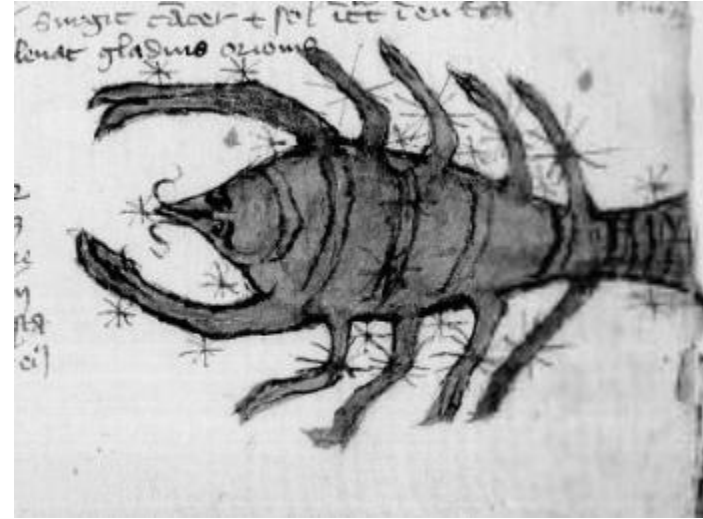
Vienna, ONB
Vindob 2378
n.b. – vertical crayfish

Bohemian – IIIa.



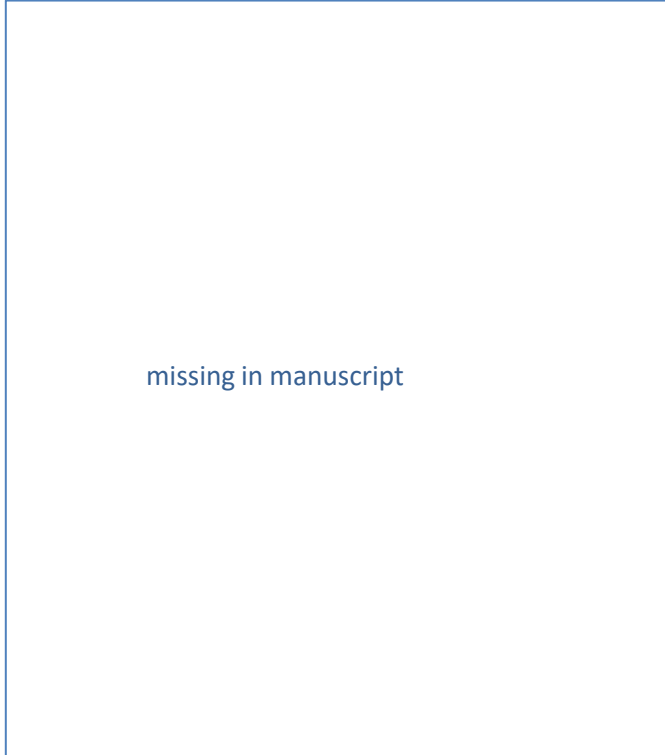
Prague NK,
Ms III. C. 2
n.b. – crayfish to right

Bohemian – IIIb.



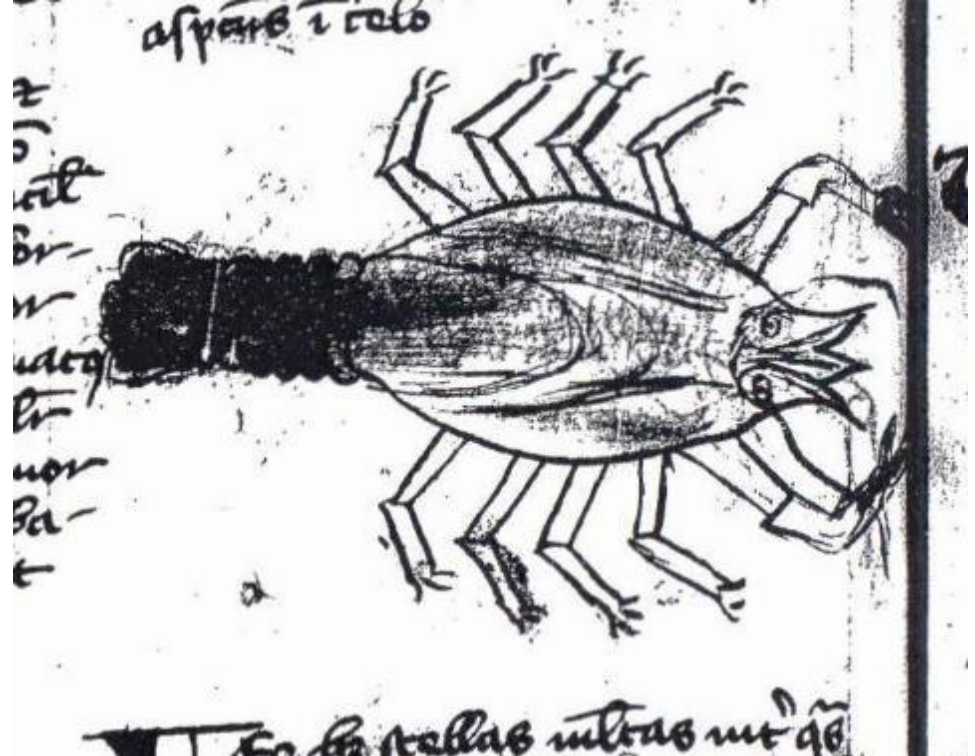
Paris BN
lat 7408A
n.b. – crayfish to left

Bohemian – IIIc.

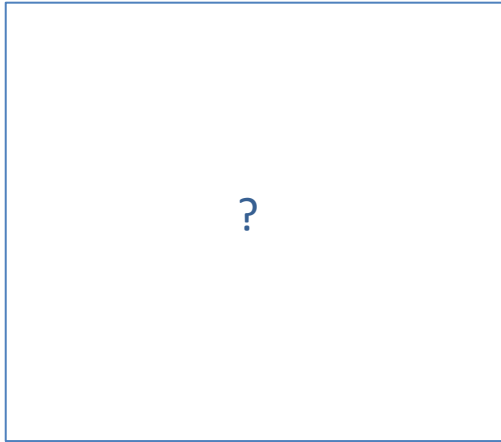


Vienna, ONB
Vindob 5442

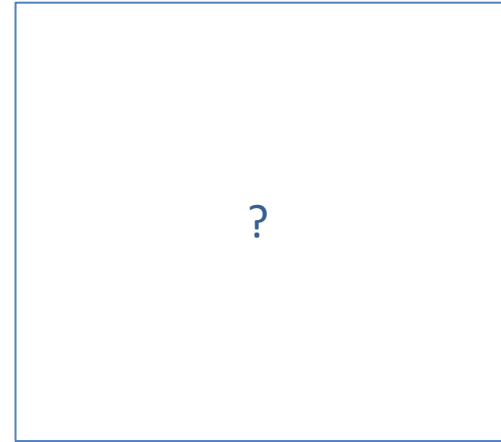
Bohemian – IIIId.



Cambridge, MA
Harvard, Houghton
Libr., Typ 43
n.b. – crayfish to right



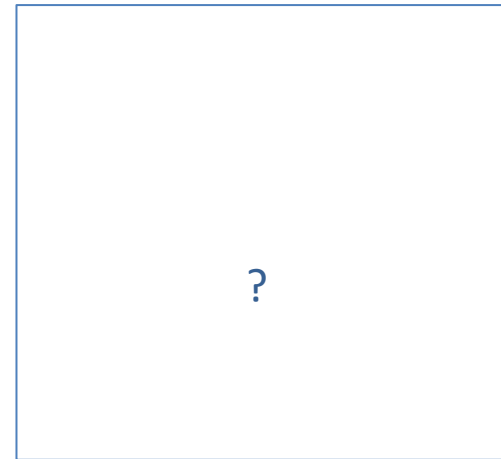
Edinburgh, Royal Observatory
Ms Cr 3. 23



Florence, BNC
Magl. XXII, 22



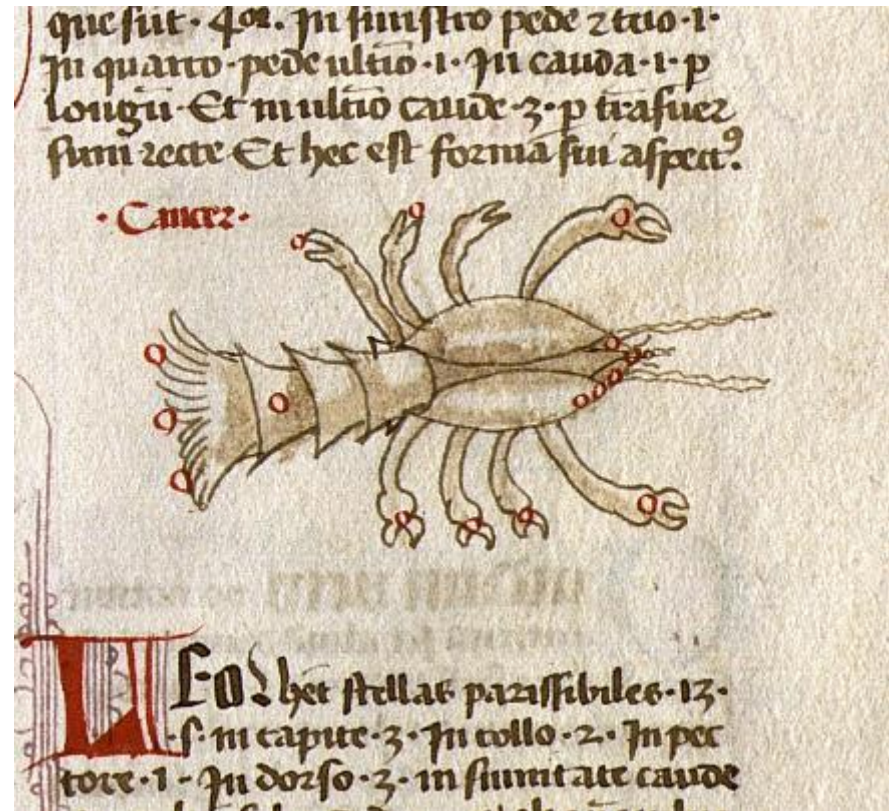
Klosterneuburg, Augustiner Ch-Stift,
Ms CCI 125
n.b. -- crayfish



Krakow, Bibl Jagiellonska
Rps 573



Prague NK,
Ms XXVI A 3
n.b. – crayfish, vertical



Seville, Bibl. Columbina
Ms 7.7.1
n.b. -- crayfish to right

Michael Scot
 German mss – IVa.

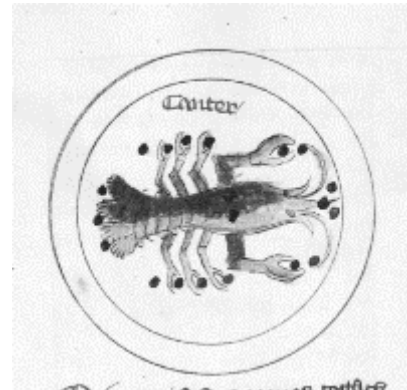
Cancer



Darmstadt, Hess Hochschulbibl.
 Ms 266



Berlin, Staatsbibl
 Ms germ fol 244



Salzburg, Studienbibl
 2 G 8/13



Vatican, BAV
 Pal lat 1370



Berlin constellation

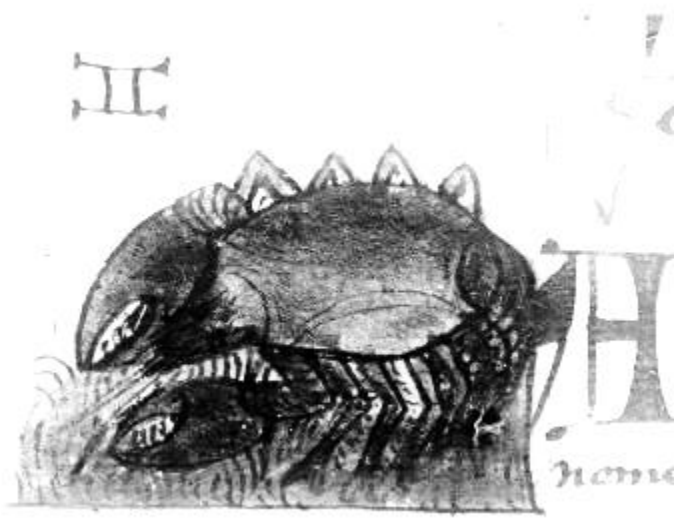


Berlin – Luna with house

Michael Scot

Cancer

German mss – IVa.



Paris, BN
Allem 106

German mss – IVb.



Tubingen Univ-bibl.
Ms D.2



calendar



prosopa of Cancer



Luna's children



Luna's house



paranatellonta – n. hemisphere

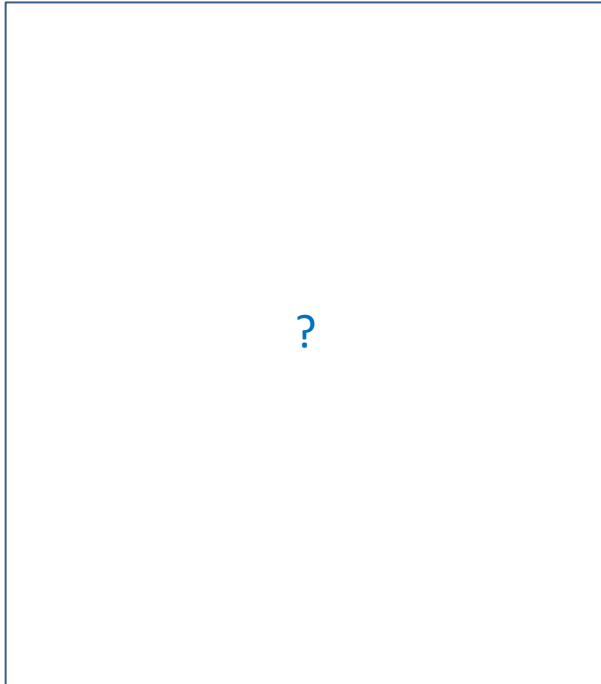


s. hemisphere



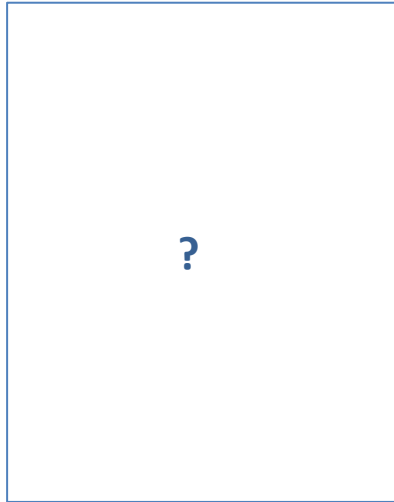
zodiac rota

German mss – IVb.

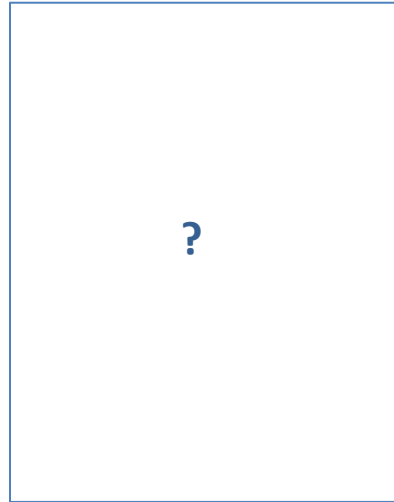


Wolfenbüttel, Herz Aug Bibl
Ms Guelph 29 14 Aug 4°

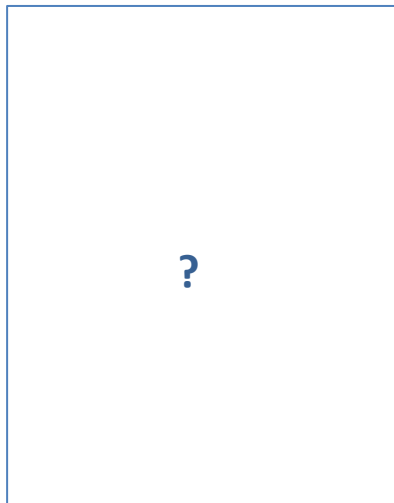
prosopa of Cancer



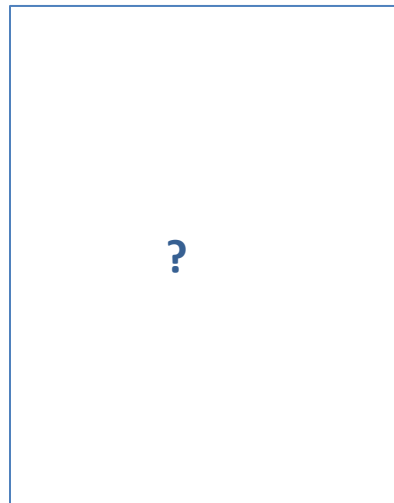
Coburg, Bayerisches
Landesbibl
Ms 5



Edinburgh, Roy Obs Library
Ms Cr 4 6



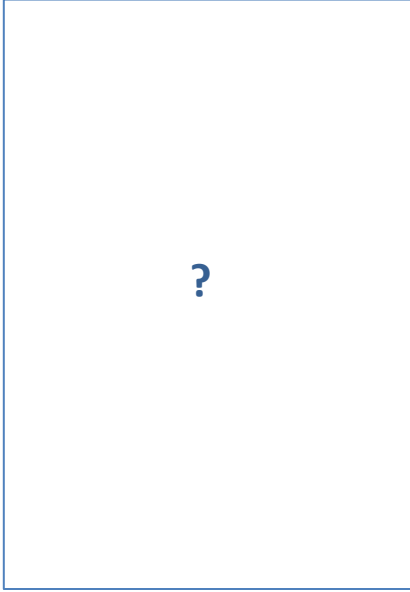
Freiburg, Univ.-bibl.
Ms 458



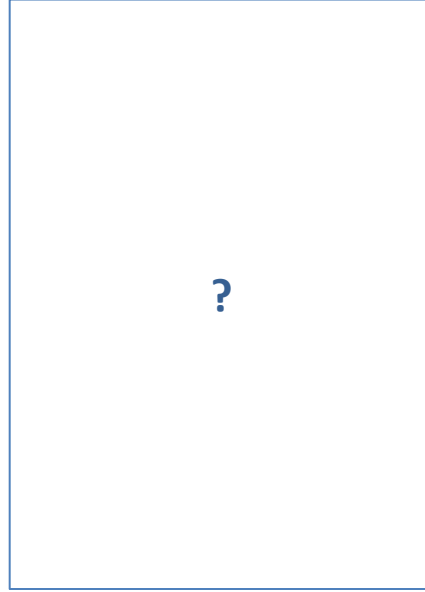
Heidelberg, Univ.-bibl.
Pal germ 458

Michael Scot
German mss – IVa.

Cancer



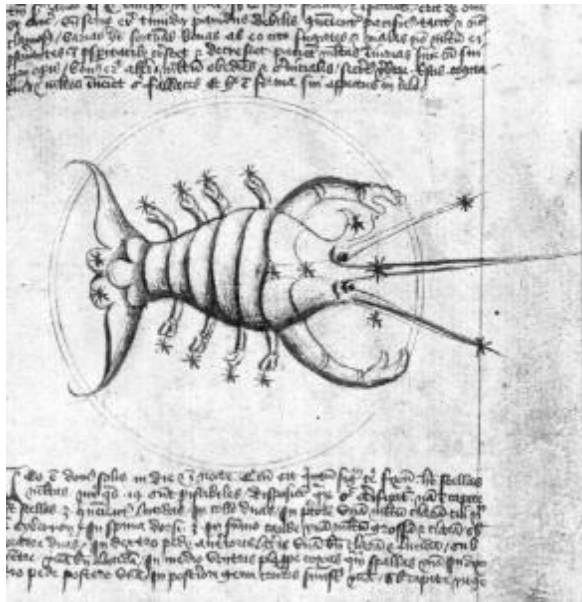
Karlsruhe, Badische
Landisbibl.
Ms K 2790



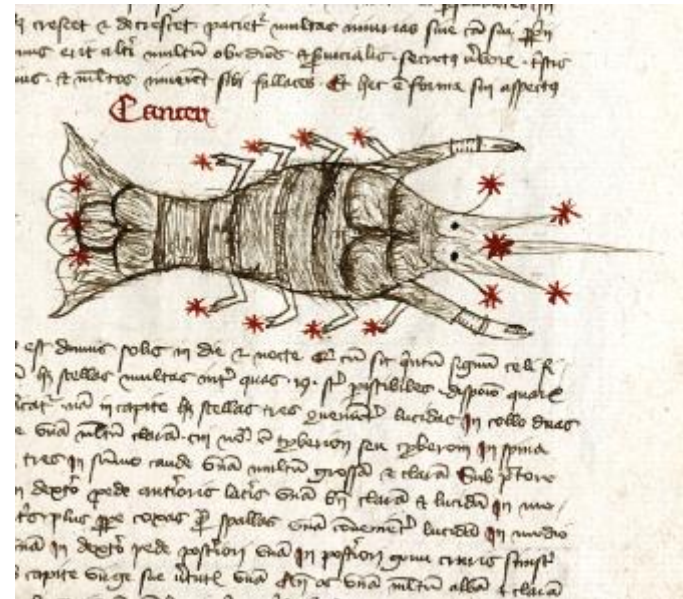
Nürnberg, Germanisches
Nationalmus.
Ms 7082

Venice: Ratdolt, 1482

Bartolommeo da Parma



Cambridge, Emmanuel College
 Ms 70
 n.b. – crayfish to right

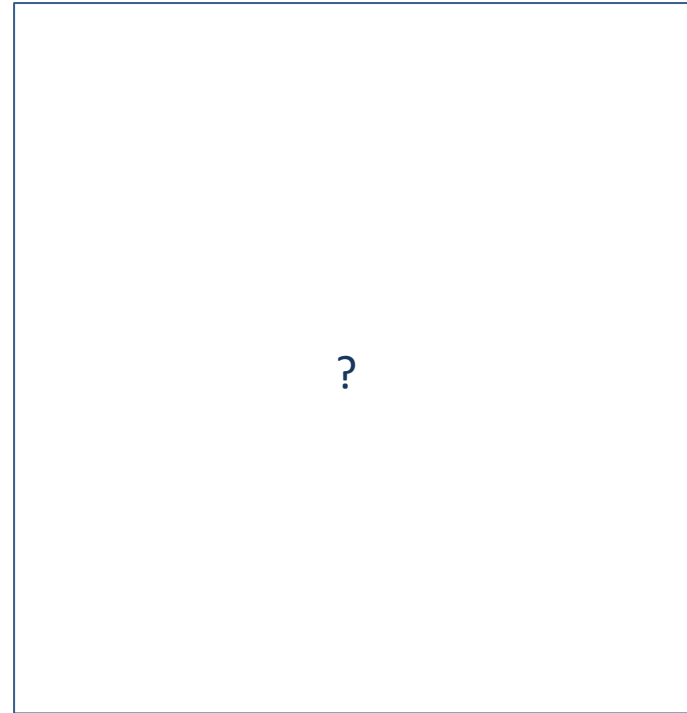


Metz, Bibl. Com.
 Ms 287
 same

Fazio degli Uberti

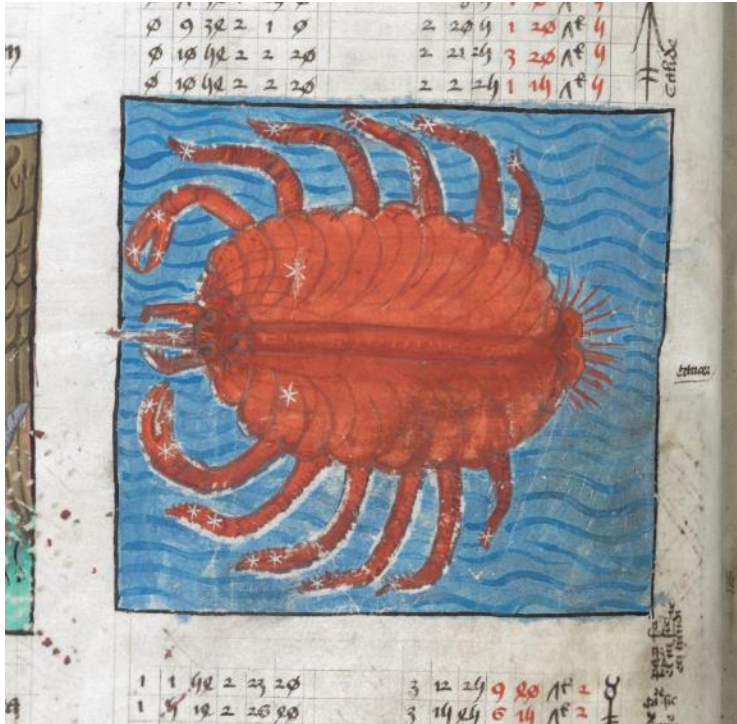


Paris, BN,
Ital 81
n.b. -- vertical



Modena, Bibl. Estense
Ms ital 483 (α. P. 47)

Alfonsine Tables (John Killingworth update)



London, BL

Arundel Ms 66

n.b. – to left

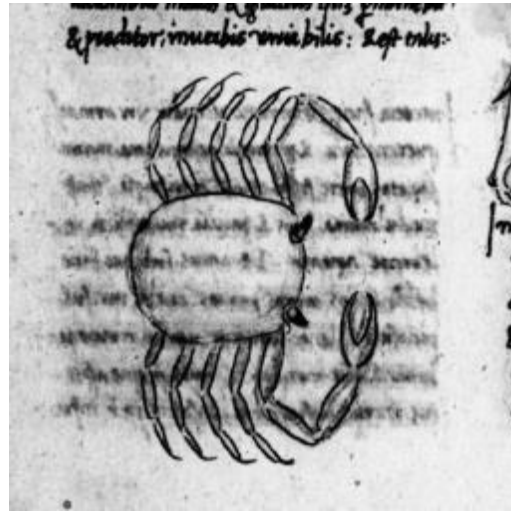
image from 1482 Hyginus = Michael Scot

Stellacio Cancri

Ludovicus de Angulo



St Gallen, Vadianische Libr
Ms 427
n.b. – crayfish to left



Florence, Bibl. Riccardiana
Ms 3011
crab to right

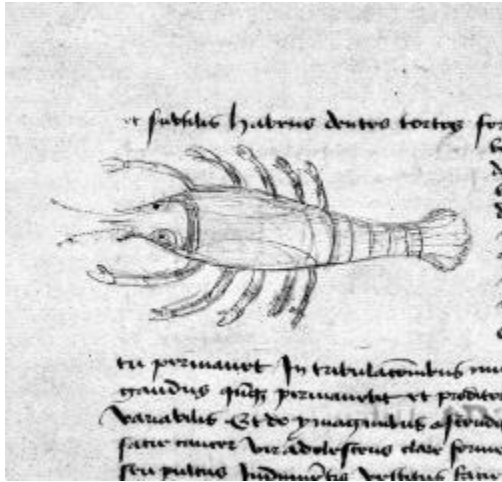


Madrid, BN
Ms 9267
crayfish to left

Michael Scot - derived

Ludovicus de Angulo

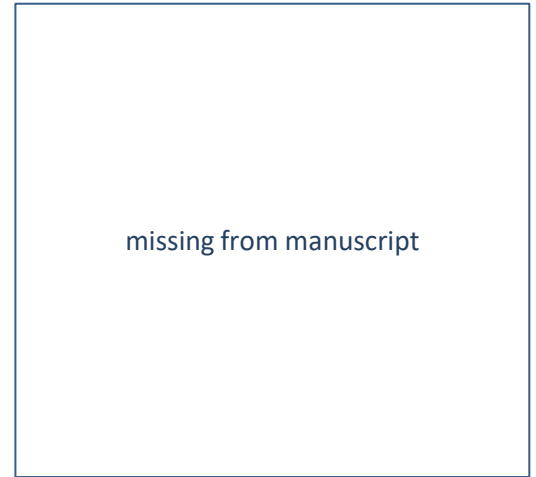
Cancer



Paris BN
Lat 6561
crayfish to left



Paris BN
Fr 612
crab to right



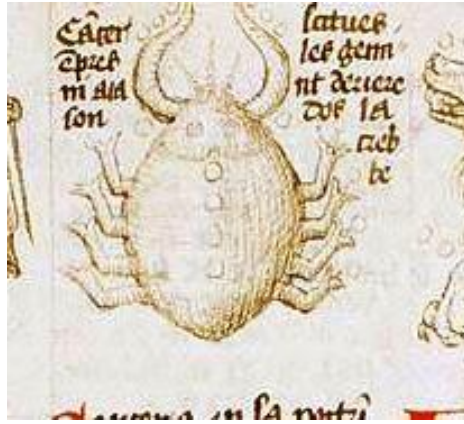
Paris BN
Lat 7344

Lambertus, Liber Floridus

Cancer



Hague
Ms 72.A



Hague
Ms 128 C



Paris, BN Lat 8865
n.b. – crayfish



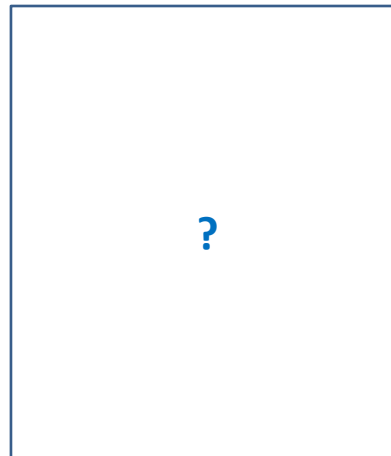
Chantilly 724 (1596)



Leiden, Univ-bibl
Ms 1° 31
n.b. -- crayfish



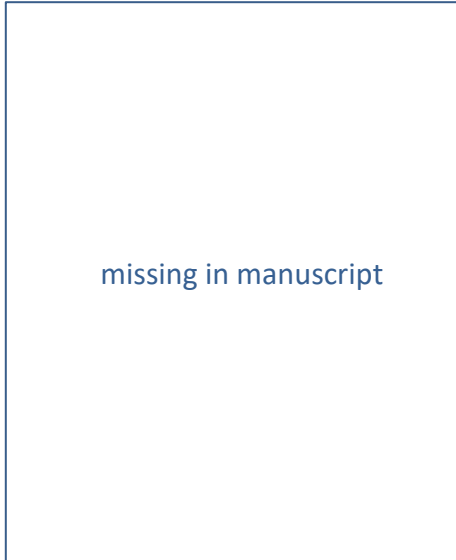
Ghent
Ms 92



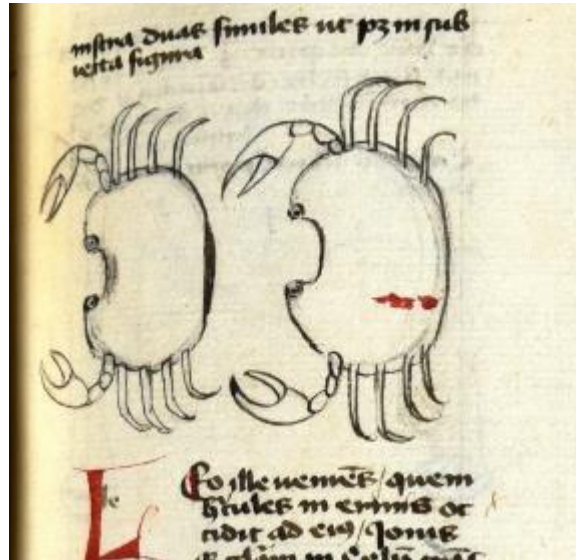
Paris, BN
Allem 106



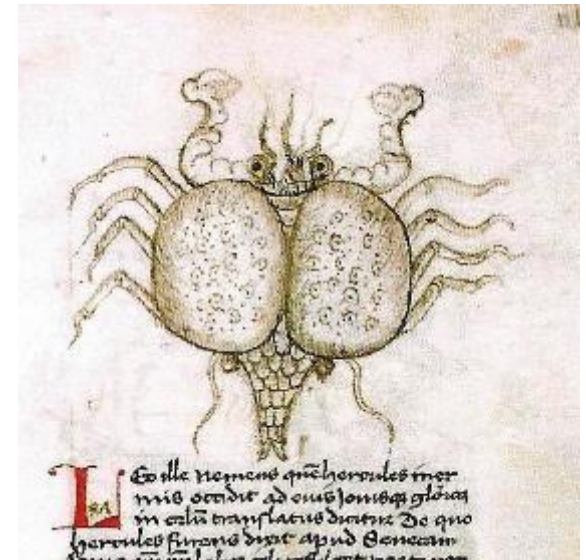
Wolfenbüttel, WDB,
Ms Gud lat 1



Fermo, Bibl. Com.
Ms 4



Florence, Laurenziana
Aedil 170
similar, missing stars



London, Lambeth Palace
Ms 35
single crab, placed vertically



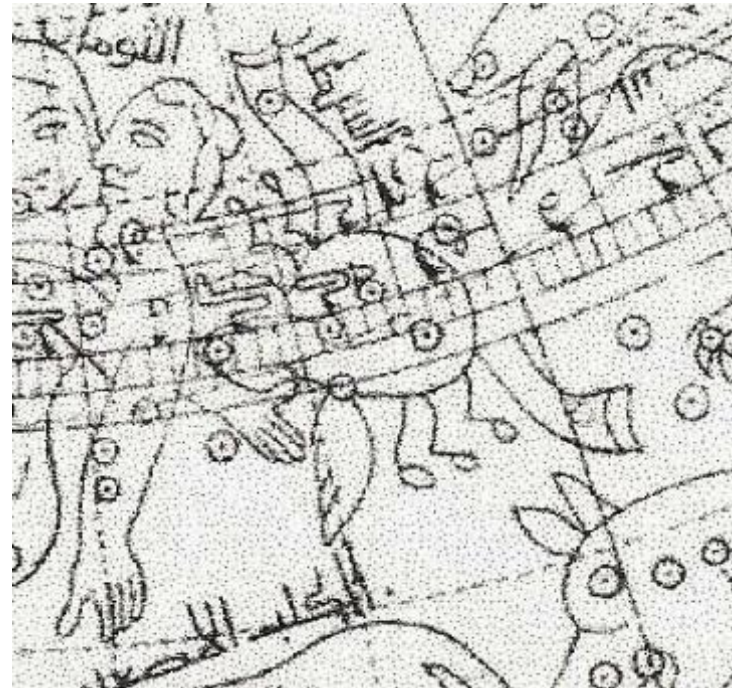
Florence, Bibl Laurenziana



detail from planisphere

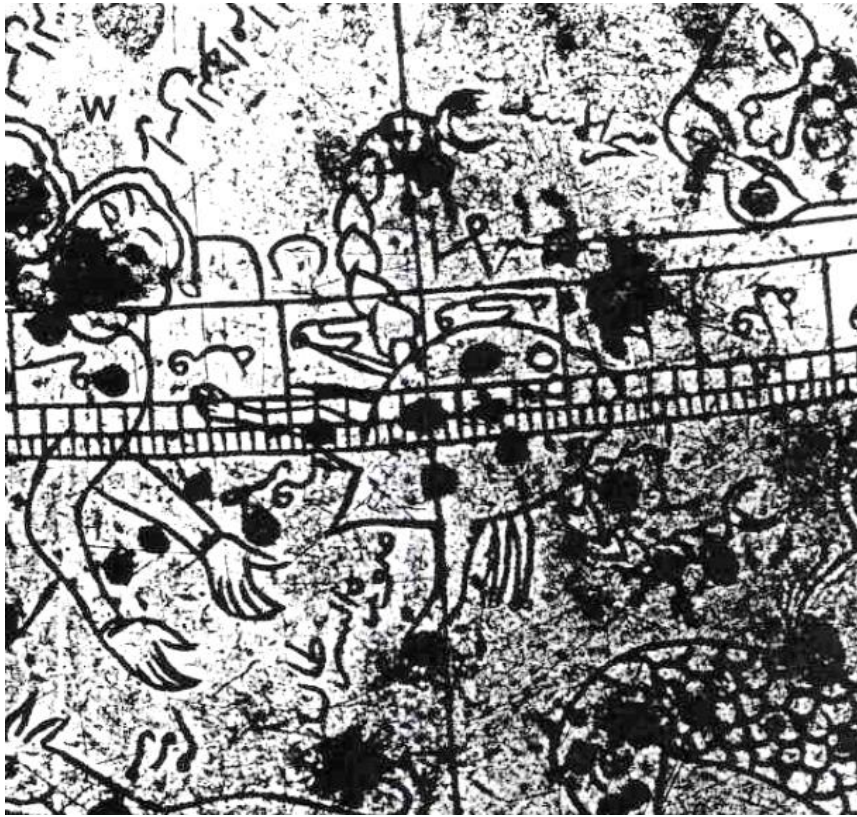


Florence, Mus delle Scienze, no. 2712
dated 1025 AD
n.b. – to right, very long square claws



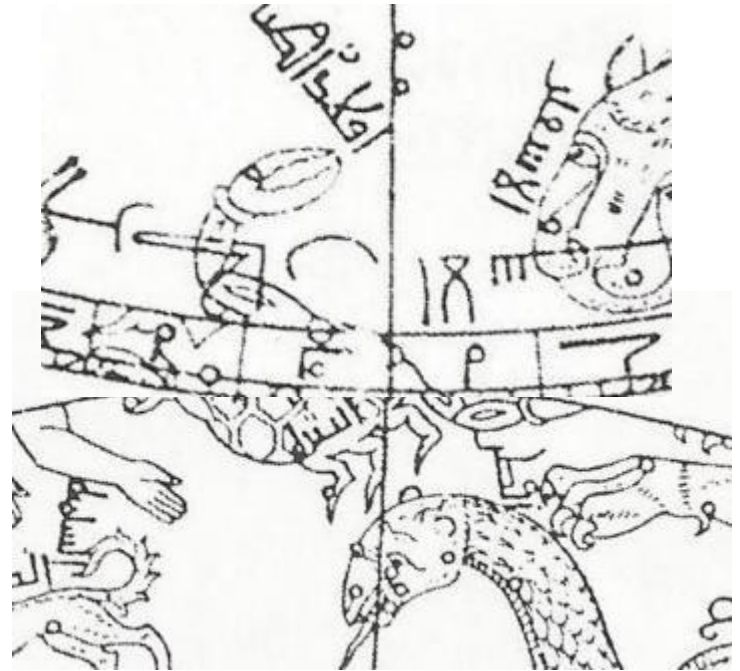
Paris globe GA 325
same

Eastern Globes

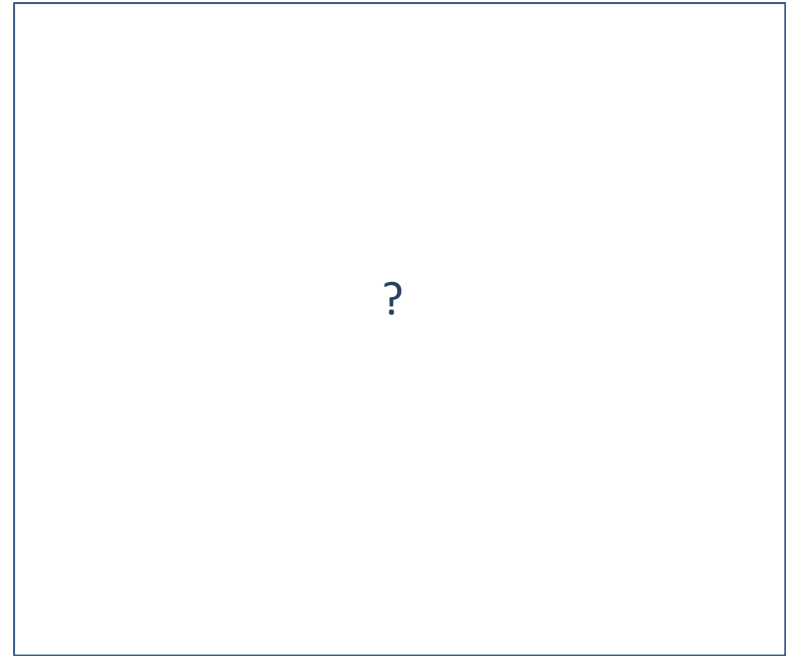


Smithsonian Mus, no 72-3085
n.b. – to right, segmented front claws
cf: SAVAGE SMITH 1985

Cancer

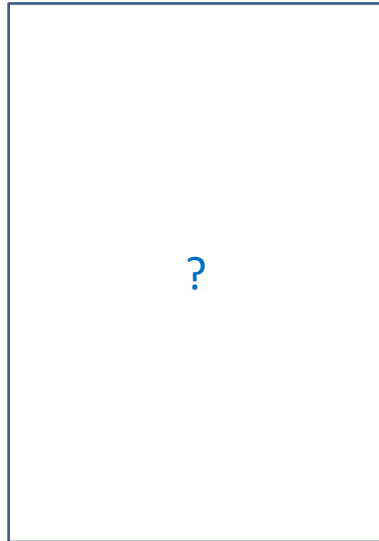


London, BM – Malcolm globe



Doha, Mus of Islamic Art
Ms 2. 1998. SO (= Sotheby's 1998, lot 34)
Dated April 1125 AD; Baghdād
n.b. – placed vertically, rectangular body

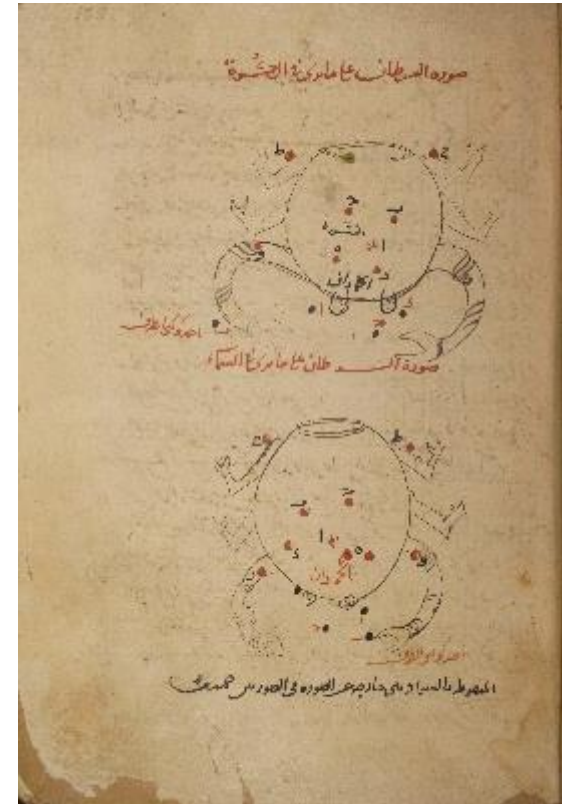
Istanbul, Süleymaniye Libr
Ms Fatih Kütüphanesi 3422
1125/26 AD; Mārdin



Istanbul, Topkapī Sarayī
Ahmet II 3493
1130-31 AD, Mayyafariqin, SE Turkey

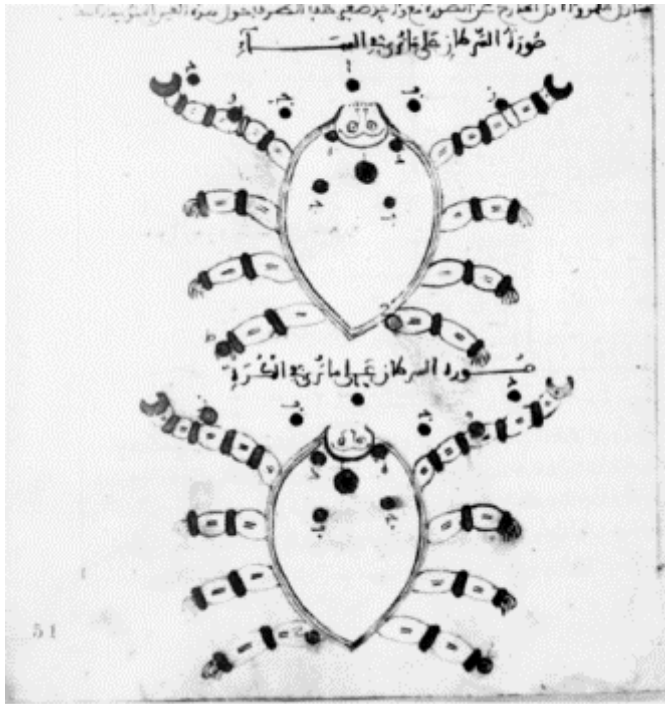


Oxford, Bodleian Libr
Huntington Ms 212
1170/71 AD; Mosul
n.b. – long front claws



Oxford, Bodleian Libr
Ms Marsh 144
1009-1010 AD; Shiraz (?), Iran
n.b. – both facing down

Berlin, Staatsbibl.
Ms qu or 704
c. 1203
similar



Vatican, BAV
 Ross 1033
 1224 AD, Ceuta (?) N Africa
 n.b. – tarantula-like, both facing up



Berlin, Staatsbibl.
 Landberg 71
 Aug/Sept 1233; Mosul
 stylised, both facing down

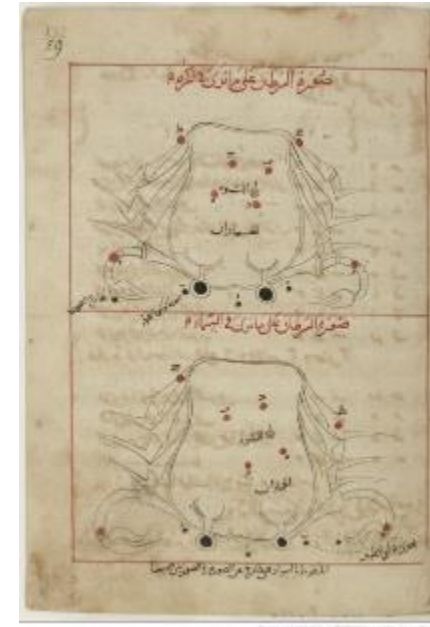
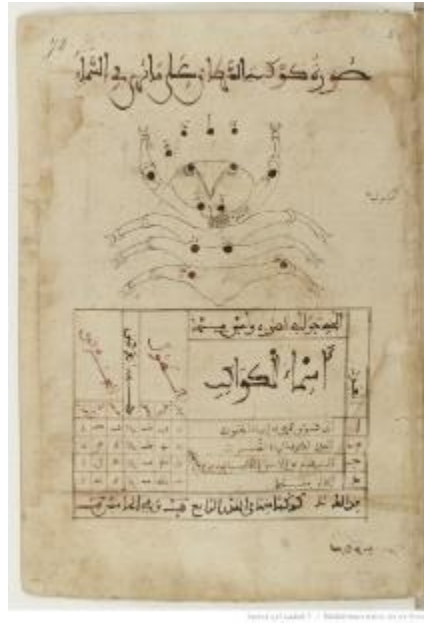


?

Istanbul, Suleymanie Libr
Ayasofia 2595
1249-50 AD; Alamut (?) Iran



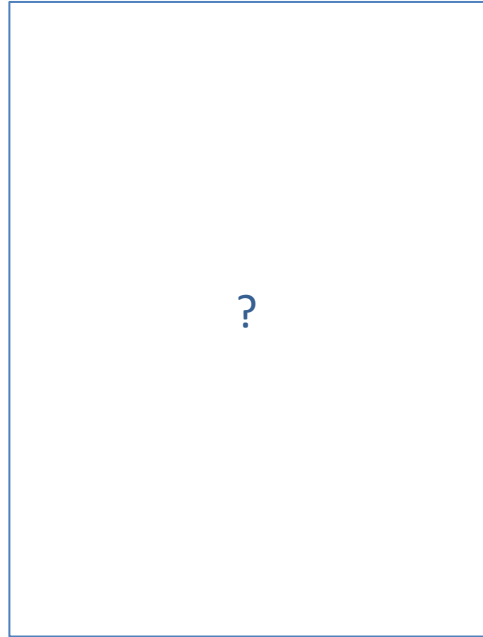
Paris BN
Arabe 2488
mid-13th C, Ceuta (?) N Africa
n.b. – odd segmented body, facing up



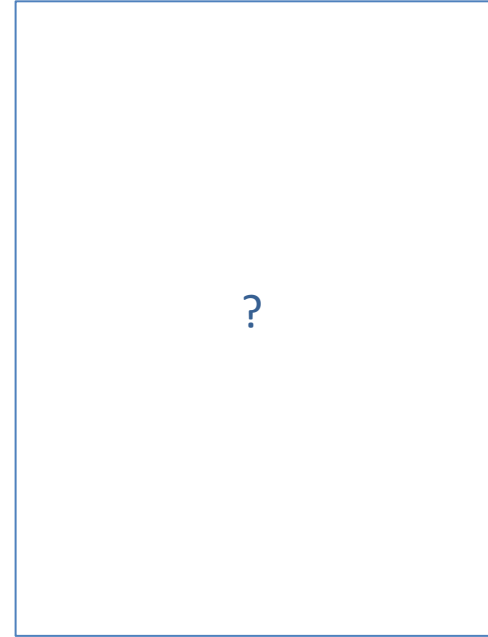
Paris BN
Arabe 2489
1266-67 AD; Syria?
n.b. – rectangular body, facing down



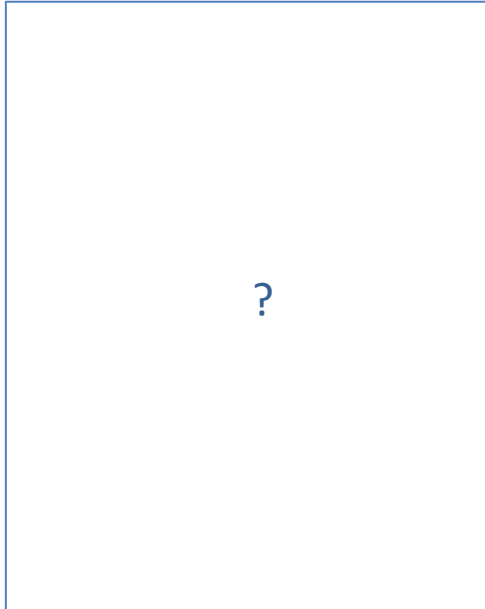
London BL
Or 5323
1260-80; Maragha (?), NW Iran
n.b. – heart-shaped body, facing up



Cairo, National Libr
Ms Dar al-Kutub miqāt 390
1300 AD



Oxford, Bodleian Libr
Pococke 257
1303/04; Aleppo



Escorial
Ms 915
20 March 1364 AD



NY, Metropolitan Mus
Ms Rogers Fund 1913
c. 1400, Samarkand
n.b. – facing down



Paris BN
Ms arabe 5036
c. 1430-40, Samarkand
segmented



Bologna, Bibl. Univ
Ms 2953
8 Oct 1500 AD



Dublin, Chester Beatty Libr
Ms Ar 4119
1504/05 AD



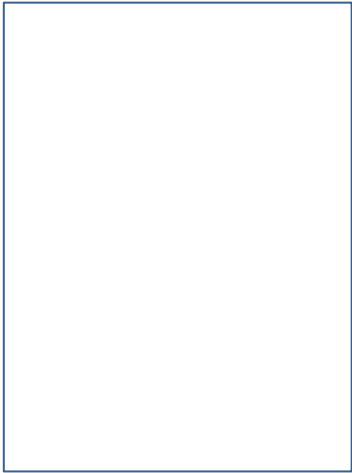
Paris BN
Arabe 2490
1516/17 AD



n.b. – three versions, rectangular bodies

non-Latin Eastern mss (al-Sufi, *Kitāb suwar al-kawākib al-ṭābīta*)

Cancer



Dublin, Chester Beatty Libr
Ms Ar 4222
16th C; Iran



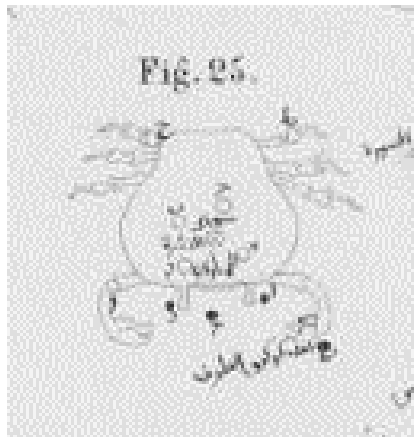
London BL
Add ms 7488
16th C



Istanbul, Perter Pasa Libr
Ms 375
16th C



Copenhagen, Kong. Bibl.
Ms arabe 83
25 May 1602 AD; Medina; copied from copy dated 1013/14
AD believed to be al-Sufi's own copy



St Petersburg, Inst Or Studs
Ms n.s. 191
16th C; Istanbul ?
rectangular body

Princeton, Univ Libr
Ms Garrett 2259 Yehuda
al-Sufi, dated 3 Jan 1607
same

Paris BN
Arabe 6528
India, 1643-44
n.B – long segmented claws on one side and human arms on the other



Paris BN
Arabe 2491
1770 AD
faces upwards



Paris BN
Arabe 2492
18th C
segmented bodies



non-Latin Eastern mss – al-Sufi translations, etc.

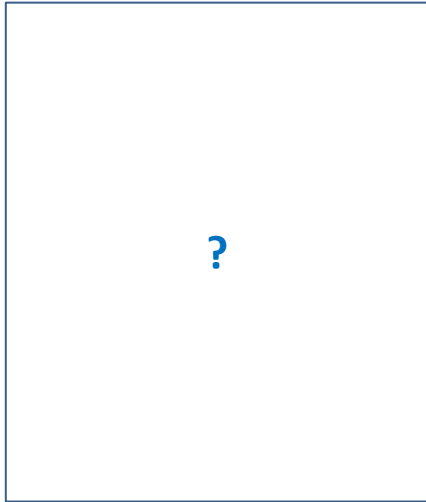
Cancer



al-Sufi, at-Tusi transl???



Tehran, Riza 'Abbasi Libr
Ms M. 570
Ibn-al-Sufi (son)
1159-60 AD



St Petersburg, Ms E (?)
Qazwini



Baltimore, Walters Art Gall
Ms W 359
n.b. – faces to left



Paris BN
Arabe 2178
1762-63 AD
n.b. – odd, earwig-like insect



Washington DC, Freer
Ms 1954-52 (ex-Sarre)
faces up, only one claw



Location unknown
Mughal, 17th c



Vienna ONB
Arabe 331
Al-Qazwini, Wonders of the World



Oxford, Bodleian Libr
Or. 133
Kitab al-bulhan comp.
ate 14th c
Cancer with Moon and Prosopa



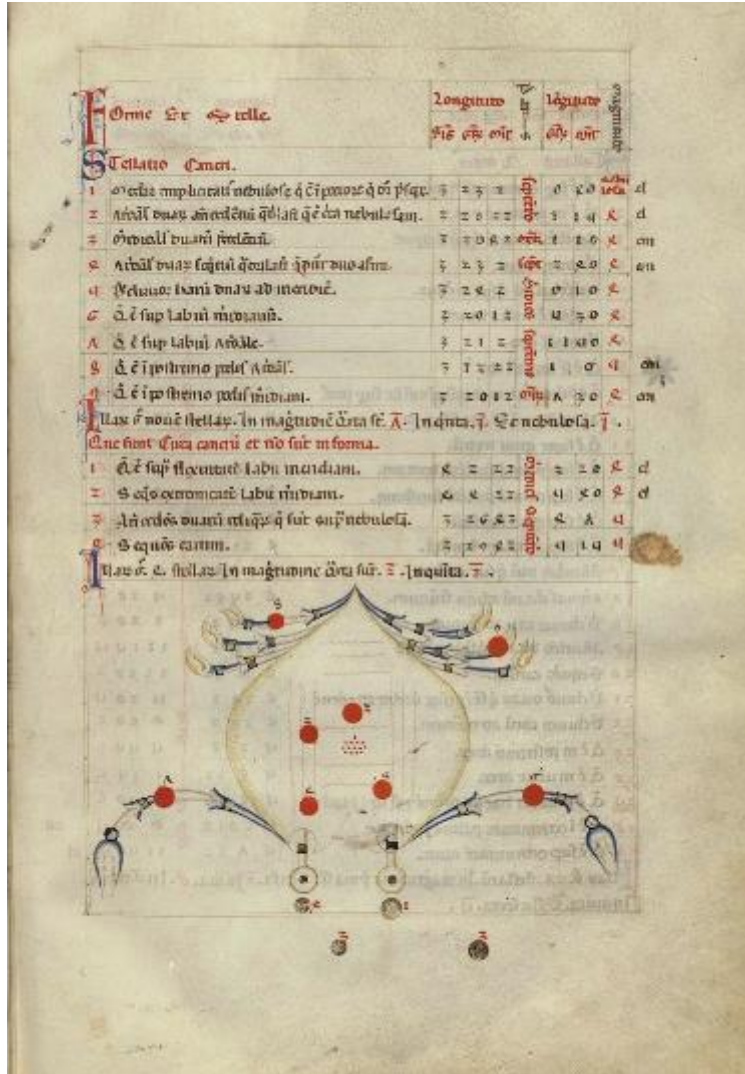
Paris BN
 Ms suppl turc 242
Kitab al- bulhan
 Turkey, 1582
 Cancer with Moon and prosopa

Paris BN
 Arabe 2583
 Abu Mashar, Book of Nativities
 Cairo, 15th C
 Cancer with terms



Source?

Boston MFA
Miniature of a waterclock
Egyptian, 1354
inv. 14.533



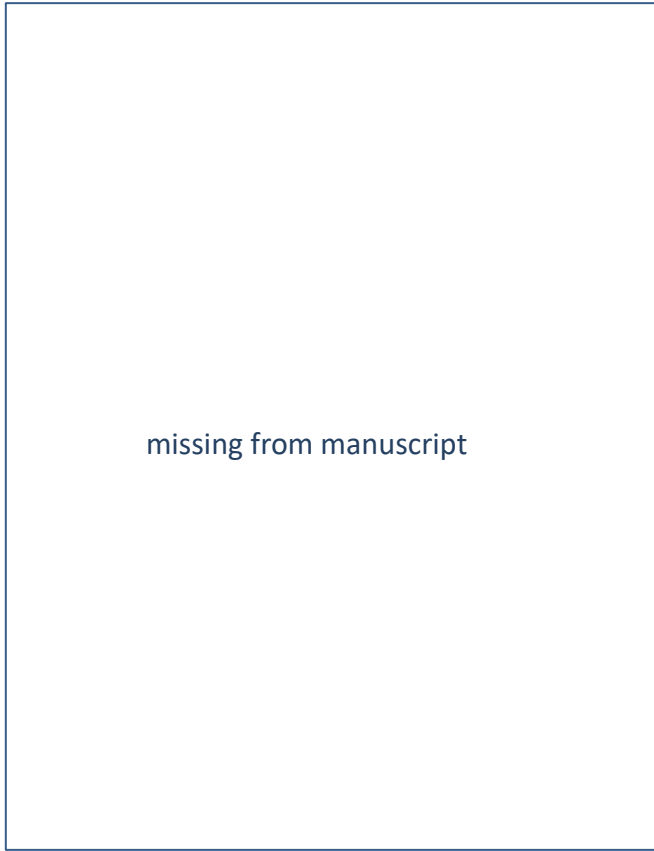
Paris, Bibl Arsenale
 Ms 1036
 n.b. – faces down



Prague, Strahov DA. II. 33
similar, but rounder body



Berlin, Staatsbibl, KK
Ms 78 D 12
same



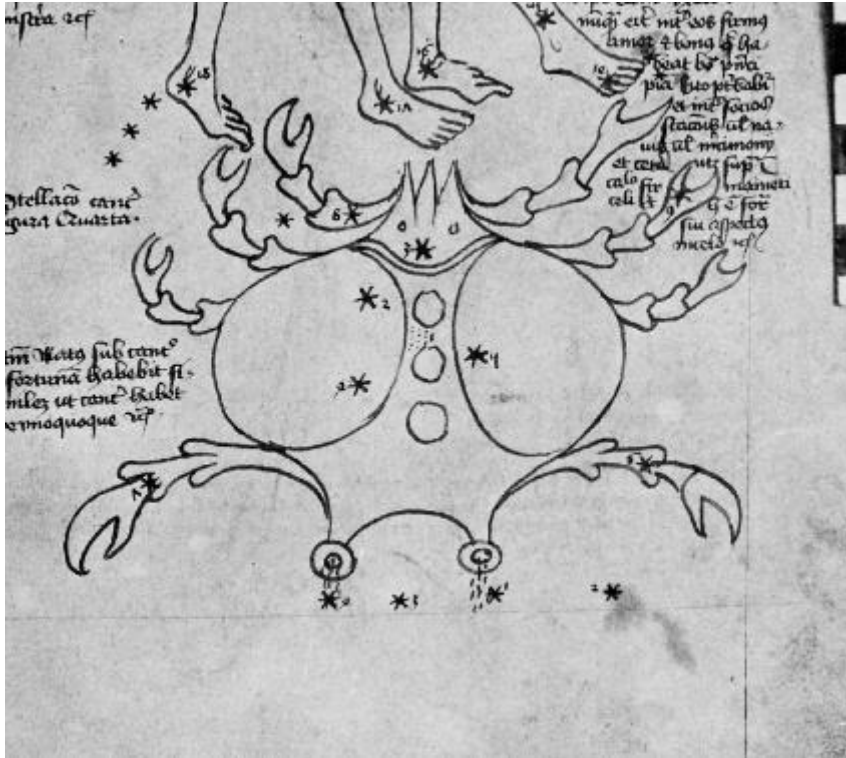
missing from manuscript



Munich, Staatsbibl
CIm 826

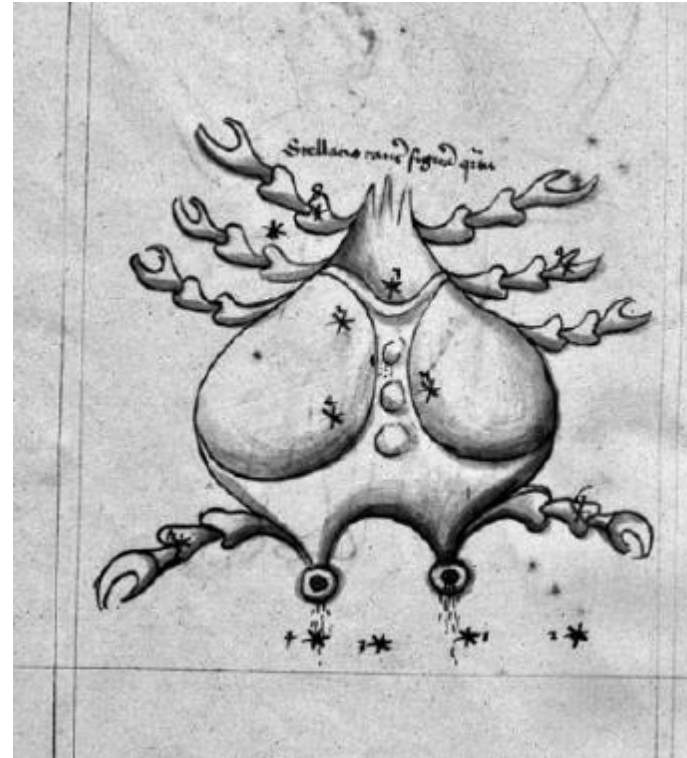
small images from rotae, etc
all crayfish

Gotha, Forschungsbibl
Membr II 141



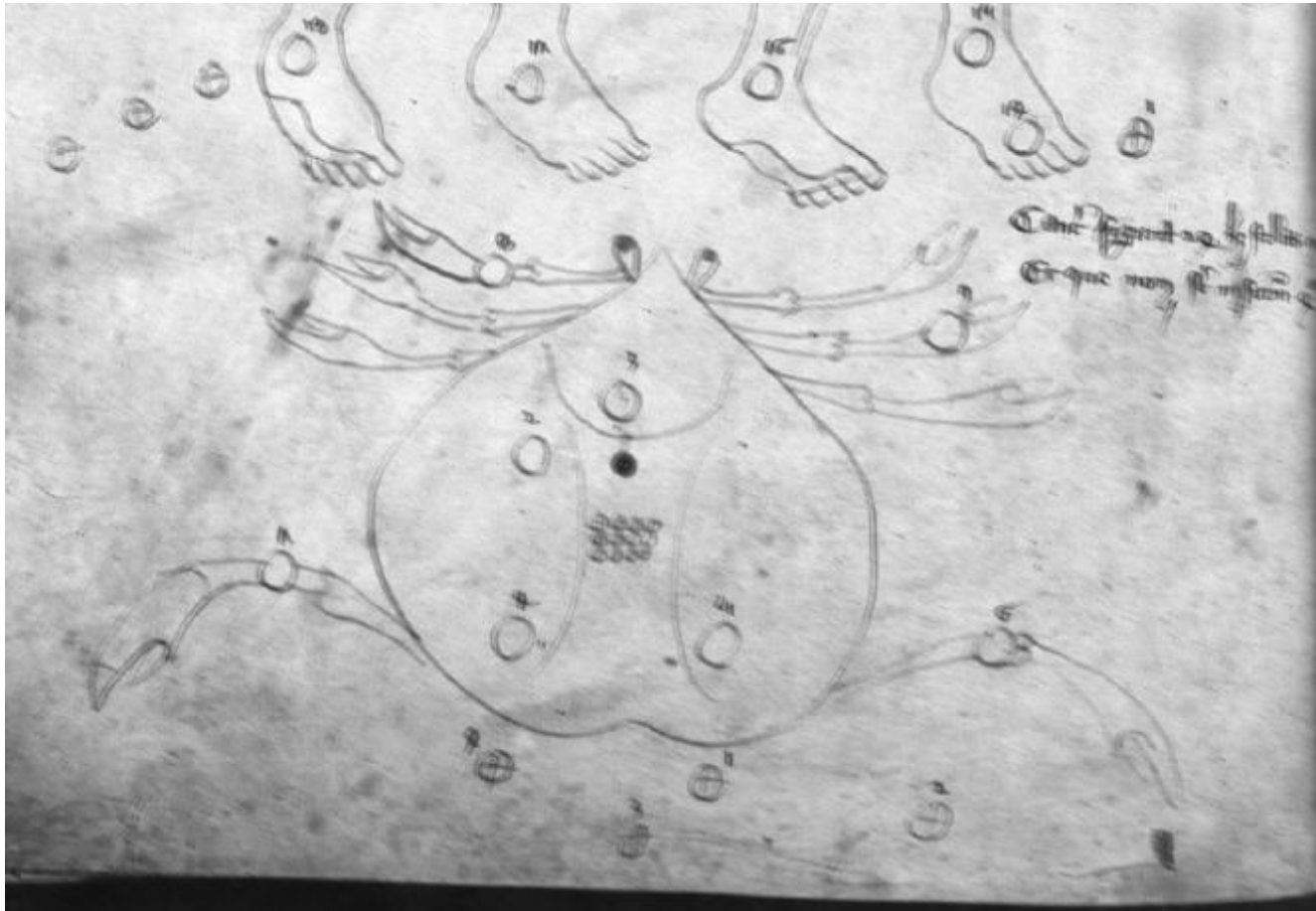
Catania, Bibl Univ
Ms Univ Ar, 387

n.b. -- scalloped body with protruding eyes, faces down

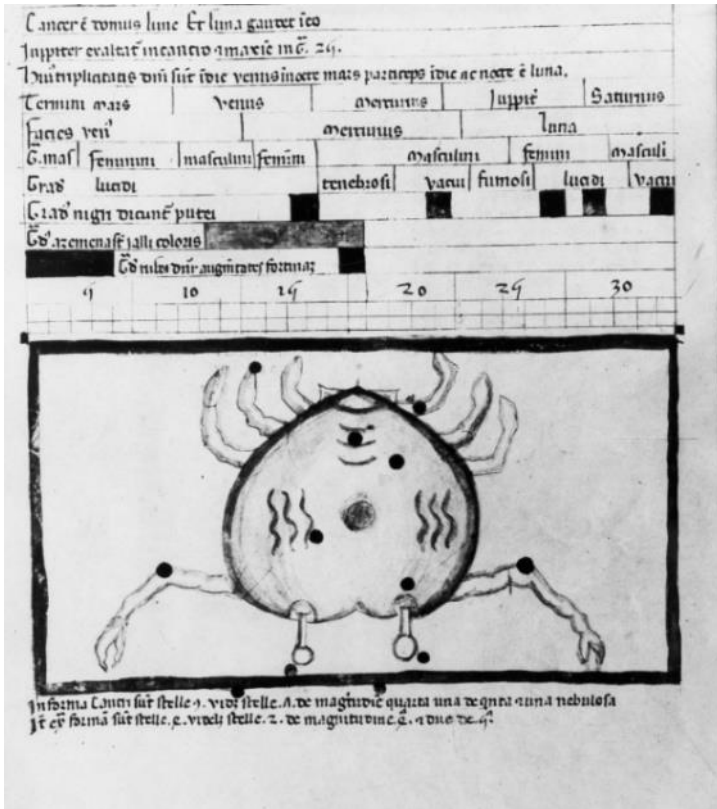


Vienna, ONB
Cod 5318

same



Bernkastel-Kues, Nicolaus hosp.
Ms 207
n.b. – heart-shaped body, faces up



London, British Library

Add. Ms 23770.

n.b. – heart-shaped body, faces down



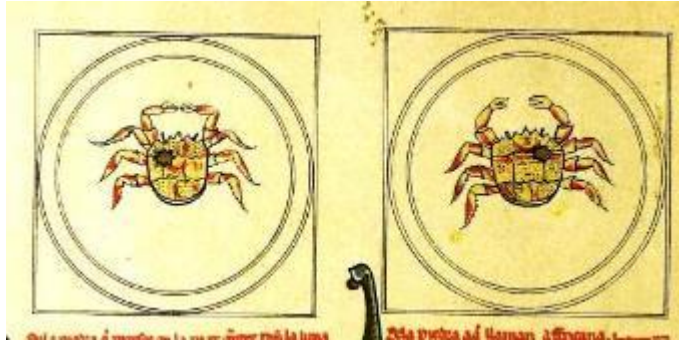
Paris, BN

Ms 7272

n.b. – roun body, faces left

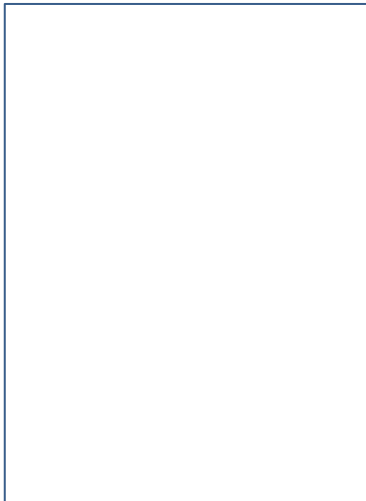
Alfonsine iconography

Cancer



El Escorial
Ms h 115
shape varies slightly, faces up

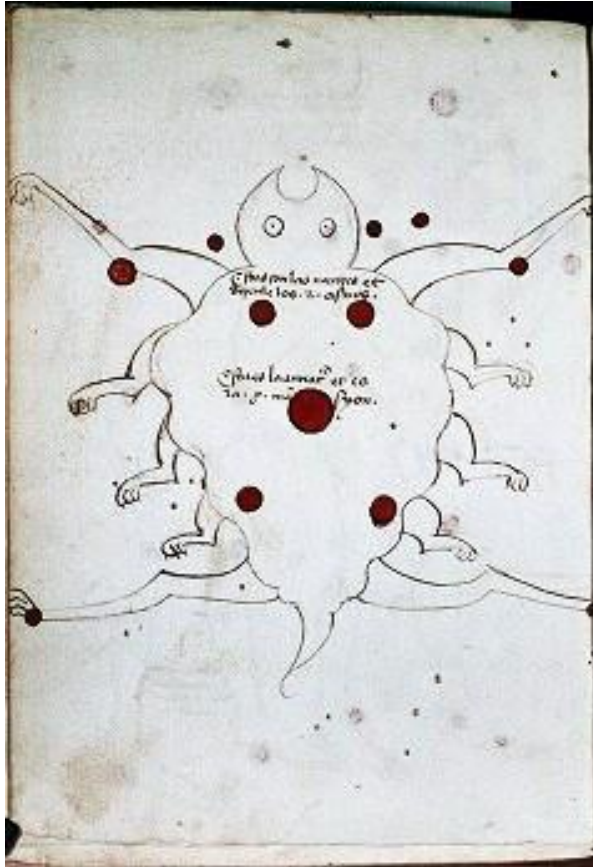
and 2 more



Vatican BAV
Vat lat 8174
Cancro ... E chiamasi in latino Cancer e
in arabico alzaratan



Los Angeles, Getty Mus
Ms Ludwig XII, 7
Constellatio Cancri et dicitur in arabicus alzaratan



Oxford, Bodleian Library

Can misc 27

n.b. – oddly-shaped body facing up



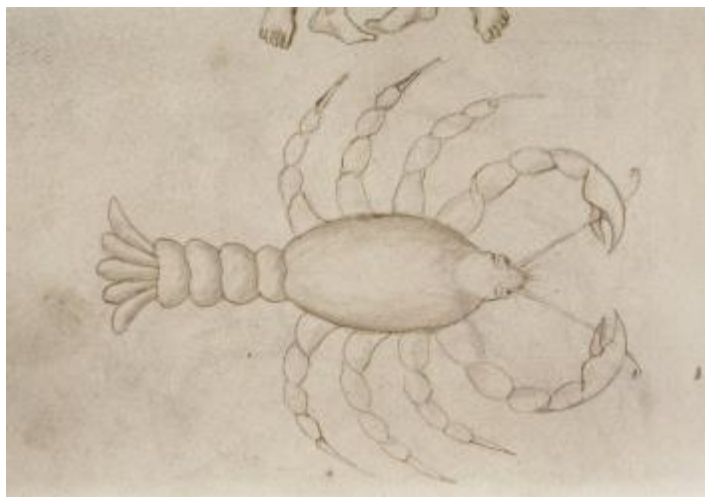
Oxford, Bodleian Libr
Rawl C 117

n.b. -- rectangular body, facing up



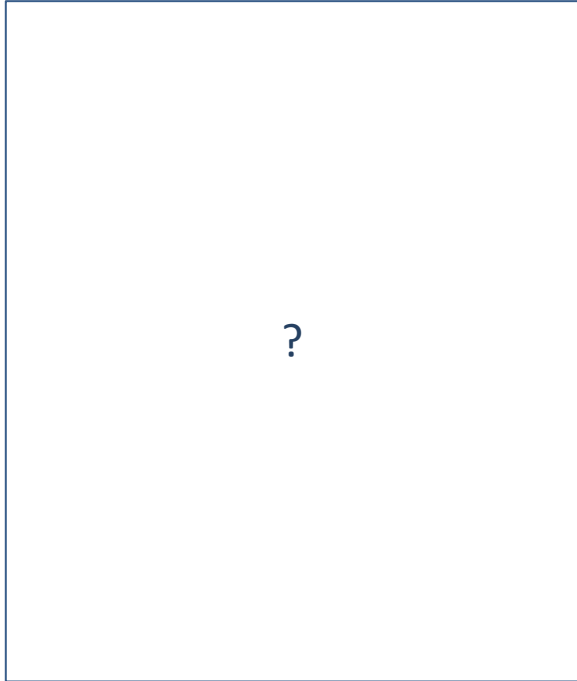
Vatican, BAV
Urb lat 1399

n.b. – crayfish, facing up

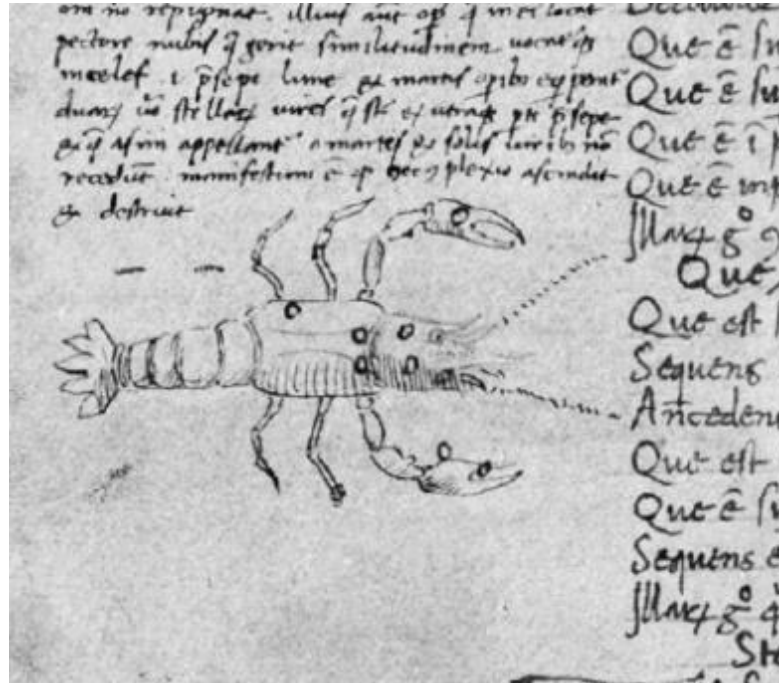


Oxford, Bodleian
Can class misc 554

n.b. – crayfish to right



Bergamo, Bibl A Mai
Ms Sigma II 2



Vatican, BAV
Vat lat 3099
n.b. – crayfish to right

Alfonsine iconography (only zodiac signs)

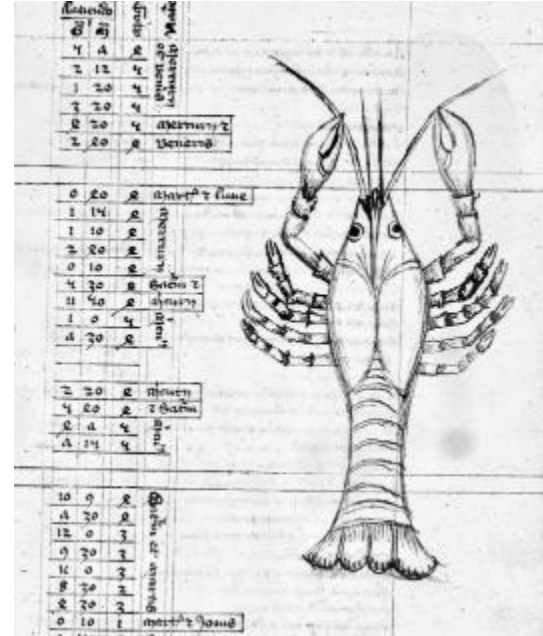
Cancer



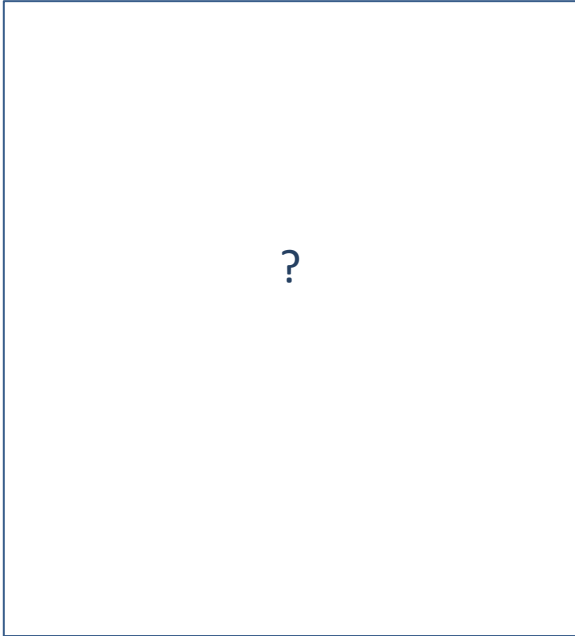
New York, Pierpont Morgan Library
Ms 355 (calendar)
crayfish facing up



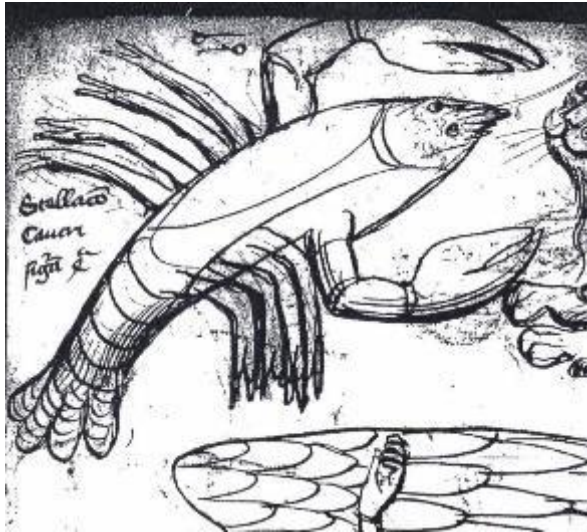
Vatican BAV
Pal lat 1377
n.b. – crayfish to right



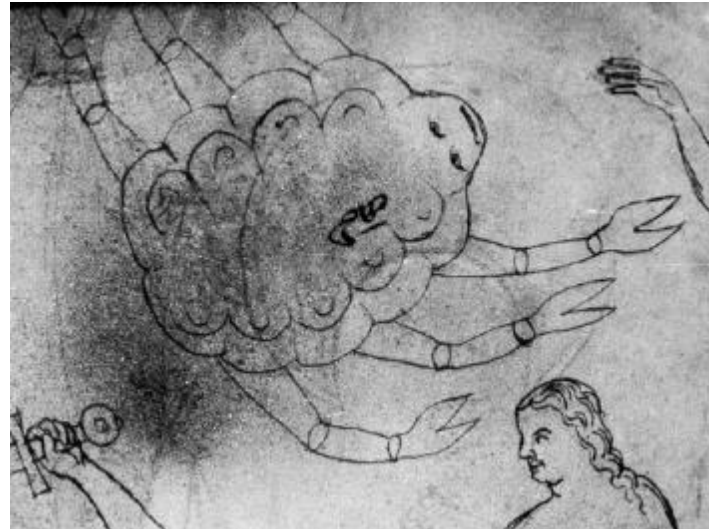
Torun
Ms 35
n.b. – crayfish vertical



Augsburg, Univ.-bibl.
Cod II. 1. 2o 110



Cambridge MA
Houghton, Typ 43
n.b. – crayfish



Basle, Univ-Bib
Ms F. II. 33
with face

missing from manuscript

'Ptolemaic' stellar tables / picture books

Cancer



Vienna ONB
Vienna 5415
n.b. – crayfish



Vienna ONB
Vienna 5415 – northern hemisphere
n.b. – crayfish





Munich, BSB

Clm 826

n.b. – crayfish with head towards top
(see also Sufi latinus II for those pictures)



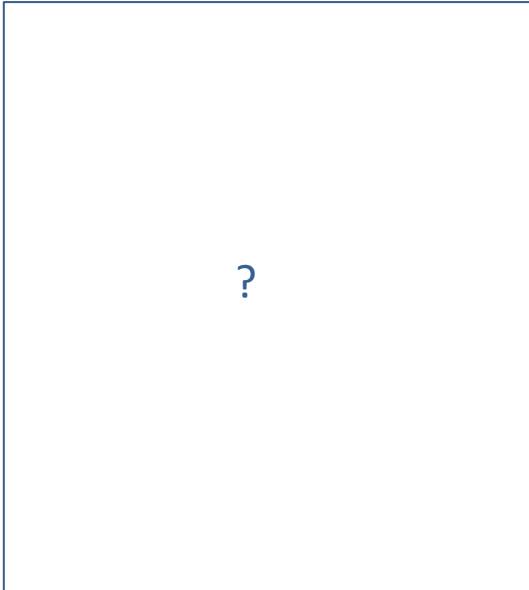
Philadelphia, U Penn
Ms LJS 57
facing up



Vienna, ONB
Hebrew 132



northern hemisphere



Padua, Univ . Bibl.
Cod 896



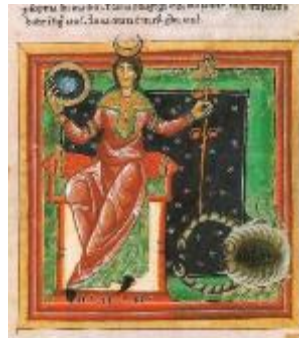
Vatican BAV
Urb lat 355
odd additional 'arms', cf. eastern globes



Vatican BAV
Vat lat 1650
same



Paris BN
Lat 7330



Luna – domus



Jupiter - exaltation



Saturn – detriment



Mars – fall



Paris BN
Lat 7331



Luna – domus



Jupiter - exaltation



Saturn – detriment



Mars – fall

Fenduli Abridgement

Cancer



London BL
Sloane 3983



Luna – domus



Jupiter - exaltation



Saturn – detriment



Mars – fall



NY Pierpont Morgan Libr
M 785



Luna – domus



Jupiter - exaltation



Saturn – detriment



Mars – fall



Paris BN
Smith-Lesouëf 8
15th C



Luna – domus



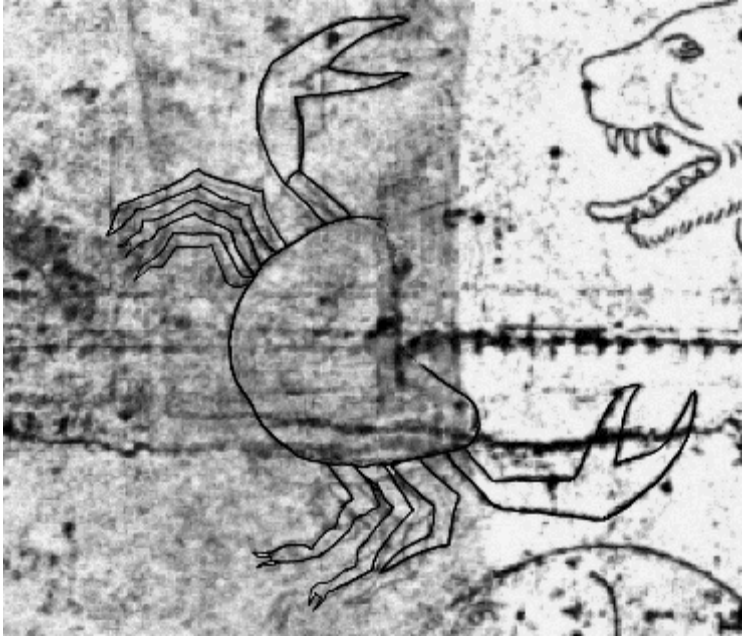
Jupiter - exaltation



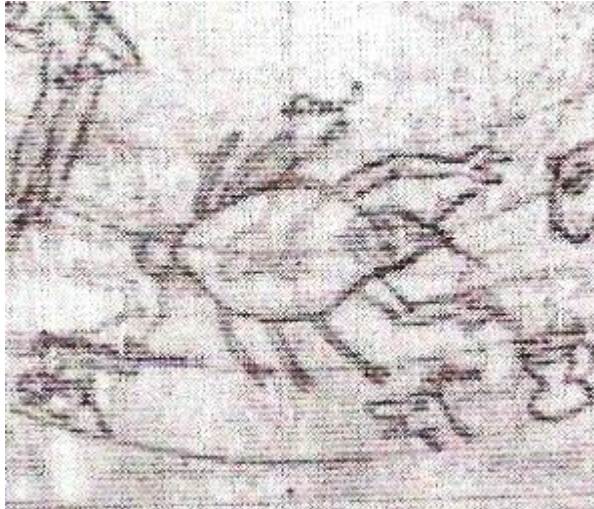
Saturn – detriment



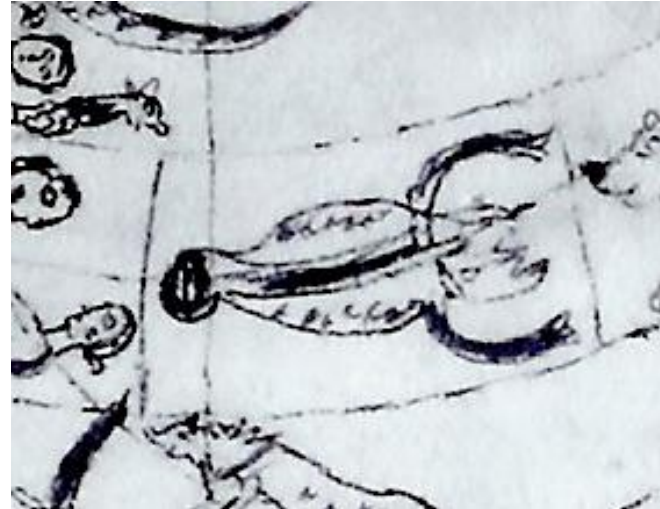
Mars – fall



Cusanus globe
© P Hadrava
crab to right



Bernkastel-Kues
St Nicholas-Hospital
Ms 212 (hemispheres)
n.b. – faces right



Darmstadt, , Univ- and Landesbibl.
Ms 1020
northern hemisphere
n.b. – faces right, with tail

Miscellaneous related images

Cancer



The 'Star-mantle' of Henry II
Bamberg, Domschatz, c. 1020
cf. RAL mss; O'Connor 1980
n.b. – vertical, facing upwards



Berlin , PKB, Ethnologisches Museen
Vase in shape of a crab from Peru, Chimbote
No. VA 18211
Photo: Peter Jacob