

**Gotha****Forschungsbibliothek****Cod. Membr II 141**

---

*Sufi latinus*

North Italian

early 15th century (before 1428)

---

Constellation images from the *Sufi latinus* tradition. Similar to Prague, Strahov Monastery, DA II 13 and Berlin, KK, 78 D 12, with the format reduced and the images slightly more systematised.

---

**contents**

ff. 2v-49r      *Sufi latinus* (cf. KUNITZSCH 1986; KUNITZSCH 1990). Star tables are set on the verso of each folio and the depictions of the constellation on each recto (apart from the multiple renderings of Andromeda).

---

**illustrations**

48 constellations depicted in full-colour on a white parchment background. The stars are drawn so that their size reflects their magnitude. They are golden stars set within red, blue and black discs and are numbered in black or red ink.



fol. 3r



fol. 4r



fol. 5r



fol. 6r



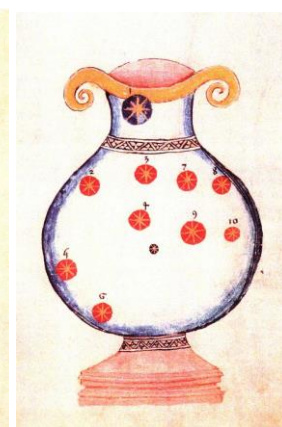
fol. 7r



fol. 8r



fol. 9r



fol. 10r



fol. 11r



fol. 12r



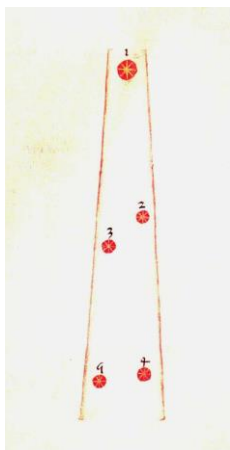
fol. 13r



fol. 14r



fol.15r



fol.16r



fol. 17r



fol.18r



fol.19r



fol. 20r



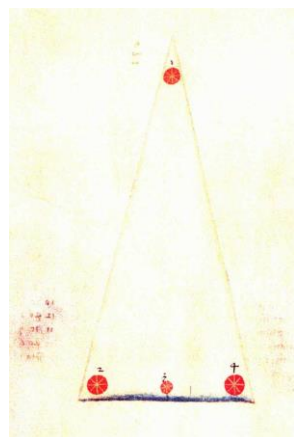
fol. 21r



fol. 21v



fol. 22r



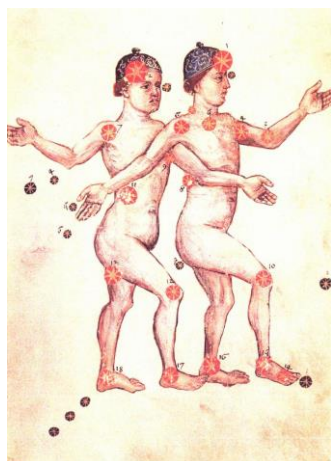
fol. 23r



fol. 24r



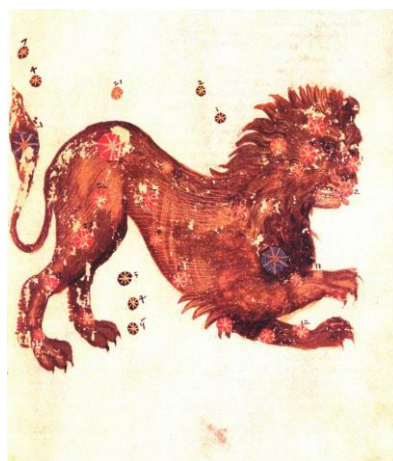
fol. 25r



fol. 26r



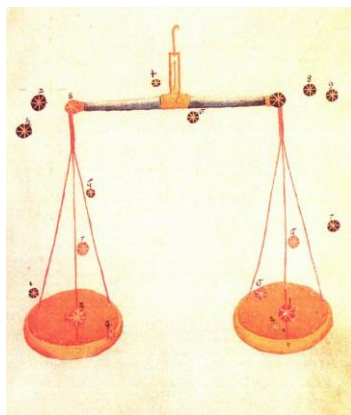
fol. 27r



fol. 28r



fol. 29r



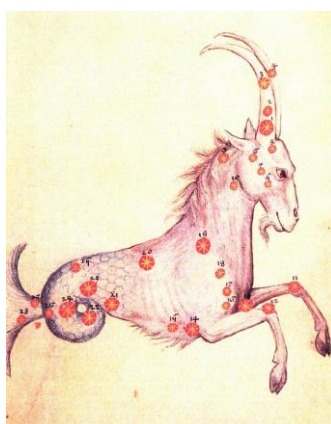
fol. 30r



fol. 31r



fol. 32r



fol. 33r



fol. 34r



fol. 35r



fol. 36r



fol. 37r



fol. 38r



fol. 39r



fol. 40r



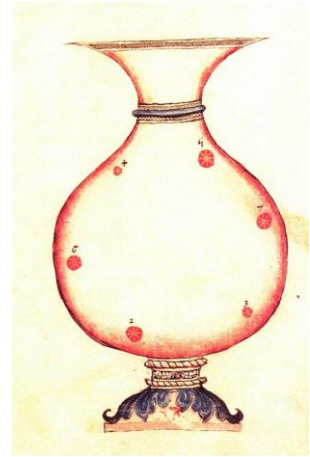
fol. 41r



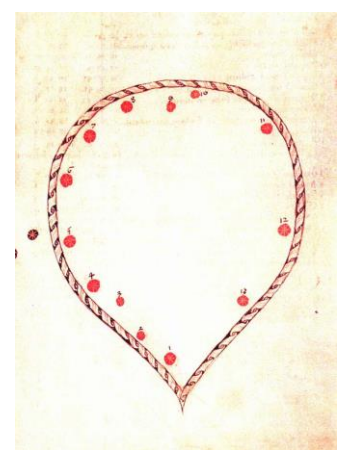
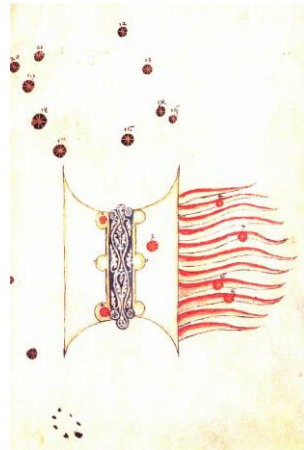
fol. 42r



fol. 43r



fol. 44r



fol. 45r

fol. 46r

fol. 47r

fol. 48r



fol. 49r

- 
- fol. 3r      URSA MINOR stands to the right. It has a long tail.
- fol. 4r      URSA MAIOR walks to the left, with its front legs close together and its hind legs splayed. It has a long tail.
- fol. 5r      DRACO is a snake with a large head and scaly tail, looking to the left. There are three curls in the body.
- fol. 6r      CEPHEUS runs to the right, arms extended and almost as if kneeling on his right knee. He has a tall, red conical hat, beard, and a rose-coloured belted, knee-length robe.
- fol. 7r      BOOTES walks slightly turned to the left, with his right leg raised. He raises his right hand above his head and holds a sword vertically in the left hand. He is bearded and wears a short, belted orange tunic, with a blue undershirt.
- fol. 8r      CORONA BOREALIS is a circular ring with golden borders and red-blue palmettes inside. The stars are inside the ring.
- fol. 9r      HERCULES kneels to the left, kneeling on his left knee. His right hand is raised in salutation and he holds a sickle in his left hand behind his head. He wears a red cap and a short, belted green tunic.
- fol. 10r      LYRA is a round-bellied urn with two handles, a profiled foot and two ornamented decorative bands.
- fol. 11r      CYGNUS is a flying, heraldic rooster.
- fol. 12r      CASSIOPEIA stands slightly turned to the right, leaning on a tall-backed chair with lion's feet behind her. She holds the seat's back with her right hand. She raises her left hand and wears a belted, rose robe and has a crown on her head.

- fol. 13r PERSEUS strides to the right, with his upper body turned back to the left. He holds a demon's head in his right hand and raises a straight sword above his head with his right hand. He has a short beard and wears a short, belted green tunic.
- fol. 14r AURIGA crouches to the right, in his left hand holding a fold of his outer garment in front of his crotch. He holds a whip vertically in his right hand. He is beardless and has a rounded blue cap.
- fol. 15r OPHIUCHUS walks to the right, he is dressed in a short blue robe with a red undershirt. The SERPENS is a long snake that faces to the right and has a knot in its neck and a curl in its tail. It is placed so that it runs behind the hips of Ophiuchus.
- fol. 16r SAGITTA is two lines placed vertically on the page and converge towards the top.
- fol. 17r AQUILA stands to the right with outstretched wings. He has an open beak and red tongue.
- fol. 18r DELPHINUS faces to the right with teeth in its pointed snout. It has a spiky backbone, beard and the gills are highlighted in red.
- fol. 19r EQUULEUS is grey horse's head and neck, with its mouth open, facing to the left.
- fol. 20r PEGASUS is half a winged horse, charging to the left with its front legs extended. The body is cut off vertically.
- fol. 21r ANDROMEDA (first variant) walks to the right, with her arms outstretched. She has long, loose hair, and wears a golden crown and a blue undergarment and red robe.
- fol. 21v ANDROMEDA (second variant) walks to the right with her arms extended. She has two superimposed fish that face right on her chest and a green robe.
- fol. 22r ANDROMEDA (third variant) walks to the right with her arms outstretched. She steps over/through a large fish that faces to the left. She has long hair.
- fol. 23r TRIANGULUM is a pointed triangle, standing on its narrow side, with a blue base.
- fol. 24r ARIES is a ram facing to the left with its front legs bent and his hind legs in a wide stride as if running. It has large, curved horns, a long tail, and looks backwards towards the right.
- fol. 25r TAURUS is half-a-bull placed vertically on the page with long, slightly curved horns and its front legs bent in front of it.
- fol. 26r GEMINI walk to the right with the arms interlaced. They are nude, save for rounded caps on their heads.
- fol. 27r CANCER is a round-bodied crab viewed from above, with its head facing downwards. Praesepe is represented on its shell as a group of red dots.
- fol. 28r LEO crouches to the right, with its front half lowered. Its jaws are open and its tail raised.

- fol. 29r VIRGO stands to the facing left, with her arms hanging at her sides, with her palms forward. Her shoulders are enlarged, especially the raised right one, and her head is tilted slightly to the side. Her hair is covered.
- fol. 30r LIBRA is a beam balance.
- fol. 31r SCORPIO faces towards the top of the page, with long front claws with small pincers. There are 4 side-claws on each side and a long, thin tail that ends in a sting.
- fol. 32r SAGITTARIUS is centaur trotting to the right, drawing a bow (European form) and its human body dressed in a loose red shirt. He wears a white headband with long ends fluttering backwards.
- fol. 33r CAPRICORN is a goat-fish facing right with a single curl in its tail. It has long, smooth ibex horns and both front legs are bent.
- fol. 34r AQUARIUS pours a stream from a vessel on his shoulder with the water falling into an L-shape at his feet. He faces slightly to the left. He wears a short red-orange belted tunic and a blue cap and raises his left hand to the side.
- fol. 35r PISCES are connected at their tail fins with a stream that has a kink in the middle.
- fol. 36r CETUS is depicted as 'leo marinis' and set vertically in the page, facing to the left. His foreparts are leonine.
- fol. 37r ORION kneels to the right on his right knee. He holds a small, curved club raised in his right hand and his left arm is also raised and covered with a long sleeve. A long, straight sword hangs on his belt in front of his body and he wears a rounded cap.
- fol. 38r ERIDANUS is a green river with the top end widening into two smaller branches.
- fol. 39r LEPUS leaps to the right, and has very long, straight ears, held vertically.
- fol. 40r CANIS MAIOR faces to the top of the page, running to the left. It has a collar with ring. Under the hind paws, there is a rectangle with stars.
- fol. 41r CANIS MINOR stands to the right, wearing a red collar with a ring.
- fol. 42r NAVIS is a large wooden caravel with square sail, sterncastle, two rowing oars and a stern rudder with yellow and blue pennants flying from the stern. In front of the bow, there are two decorated polygons containing stars.
- fol. 43r HYDRA is set vertically on the page with its head facing left. Its mouth is open and it has a long forked tongue. Crater and Corvus appear as disembodied groups of stars.
- fol. 44r CRATER is a large-bodied, footed vase.
- fol. 45r CORVUS flies to the left with its wings raised

- fol. 46r      CENTAURUS is a centaur facing left. He holds LUPUS by the hind legs in his right hand in front of him. In his left hand, he holds a branch with leaves. His human body is clothed in a short red, belted shirt and he has a grey hunter's hat on his head. The stars on Lupus are painted in blue-green instead of red.
- fol. 47r      ARA is a brazier tilted on its side, with flames coming from its top on the right.
- fol. 48r      CORONA MERIDIONALIS is a twisted band, shaped like a shield or inverted teardrop.
- fol. 49r      PISCIS AUSTRINUS is a large fish jumping to the left with its mouth open, exposing sharp teeth.

### notes

22 x 16.5 cm, parchment, 50 folia, *humanistica* in one hand (with the exception of the star numbers in the images and the note on fol. 2r), with a slight tendency towards bastard forms in the course of the text. The ms dates to before 1428, cf. the inscription of fol. 2r, which given that date as the *annus praesens*.

The smallest version of these nearly-identical Sufi Latinus mss; figures and colour schemes are nearly identical with the other versions; the pages have been arranged so that the text almost always faces the illustration - making consultation much easier. As with the other volumes, the preface mentions that this version is that of Alfonso the Wise, but the correction value for the longitude is approximate 6° (see the description in the preface: *Nota quod ab anno quo equate sunt stelle ymaginum Ptholomei contente et signate infra in hoc libro, quod creditur a quibusdam fuisse tempore Regis Alfonsi a quibusdam vero creditur fuisse ante, usque ad annum presentem, scilicet 1428, addenda sunt ad minus sex gradus supra loca longitudinum ipsarum stellarum posita in tabulis huius libri.* Metzger (2016) argues that the vague quality of these notes suggests that the owner was not a practicing astronomer and that this indicates that the ms itself was probably produced for its antiquarian/humanistic importance, rather than as a scientific tool.

### Bibliography

JACOBS 1835, p. 196.

ZINNER no. 8677.

FISCHER 1970, pp. 342-344.

STROHMEIER 1970, p. 34.

STROHMEIER 1984.

HOPF 1997, p. 82f.

*Quellen zur Astronomie* 1998, p. 51-62.

BLUME/HAFFNER/METZGER 2016, II, 1, pp. 62, 374-77 and II, 3, figs. 397-400.