

- ff. 21r-22v *Liber de imaginibus celi signisque planetis*
sections on Jupiter, Mars, Sol, Venus
- ff. 23r-24v Georgius Zothorus Zaparus Fendulus, *Liber astrologiae*, Prologue (ed. BLUME 2000, p. 216f. and BURNETT/LIPPINCOTT 2022)
- fol. 25r Michael Scot, *Liber Introductorius*/Ludovicus de Angulo *De figura seu imagine mundi*: T
section on VEXILLIUM only (with illustration)
- fof. 25r-v Michael Scotus, *De notitia figurationis planetarum prout pinguntur*
introductory section to Saturn only (with illustration)
- fol. 26r: Michael Scotus, *De notitia figurationis planetarum prout pinguntur*
final section only
- fol. 26v blank
- ff. 27r-28v Michael Scot, *Liber Introductorius*/Ludovicus de Angulo *De figura seu imagine mundi*
containing illustrations of the constellations from ERIDANUS to CENTAURUS,
- ff. 29r-v *Liber de imaginibus celi signisque planetis*
opening passages only
- ff. 30r-30v Michael Scotus, *Liber Introductorius*/Ludovicus de Angulo *De figura seu imagine mundi*
containing illustrations of the constellations from PEGASUS to LYRA
- ff. 31r-32v Michael Scotus, *De notitia figurationis planetarum prout pinguntur*
sections on Jupiter, Mars, Venus, Mercury, Sol, Luna with illustrations
- ff. 33r-v *Liber de imaginibus celi signisque planetis*
sections on Mercury and Luna
- ff. 34r-v Georgius Zothorus Zaparus Fendulus, *Liber astrologiae: De 7 Planetiis* (ed. Blume 2000, p. 217ff. and BURNETT/LIPPINCOTT 2022)
Cum in diuersis regionibus constituit (...);
Nunc astrorum effectus peculiari (...) (Abu Ma'shar VI. cap. 3; I. cap. 3);

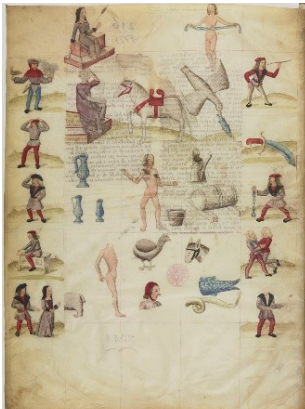
De natura Saturni (Abu Ma'shar VII. cap. 9);

De parte Saturni (Abu Ma'shar VIII. cap. 3);

De domiciliis Saturni

illustrations

n.b.: the illustrations are presented here in the order that they appear in the manuscript, recreating the haphazard manner in which they have been re-arranged and bound. The folia with the decan-illustrations have been grouped together to assist the reader. The constellations do not have their stars marked.



fol. 1v

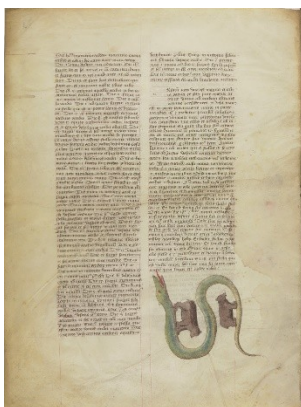


fol. 2r



fol. 2v

Aquarius



fol. 3v



fol. 4r



fol. 4v



fol. 5v

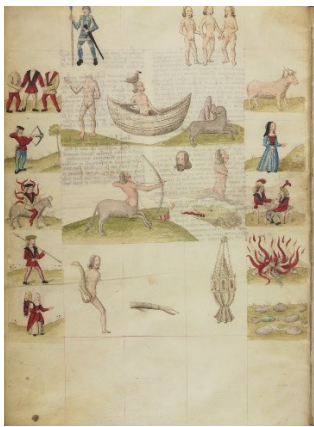


fol. 6r



fol. 6v

Pisces



fol. 7v



fol. 8r



fol. 8v

Sagittarius



fol. 9v



fol. 10r



fol. 10v

Virgo



fol. 11v



fol. 12r



fol. 12v

Taurus



fol. 13v



fol. 14r



fol. 14v

Leo



fol. 15v



fol. 15bis r



fol. 15bis v

Cancer



fol. 16v



fol. 16 bis r



fol. 16 bis v

Scorpio



fol. 17v



fol. 18r



fol. 18r

Gemini



fol. 19v

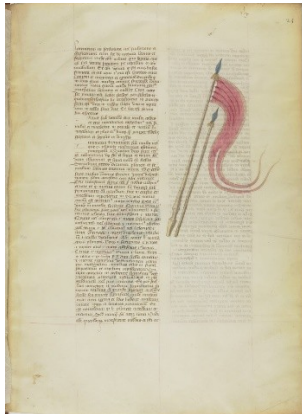


fol. 20r

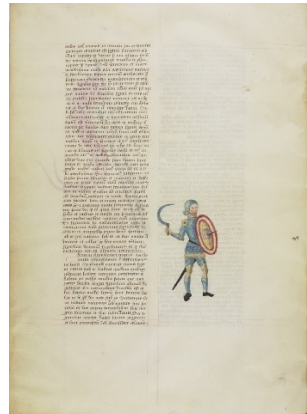


fol. 20v

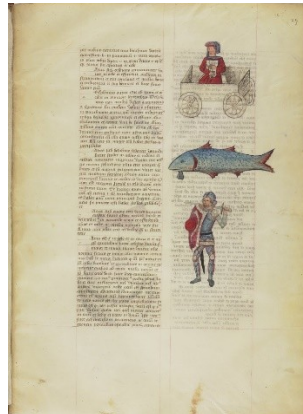
Capricorn



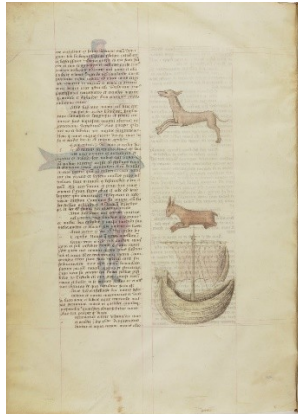
fol. 25r



fol. 25v



fol. 27r



fol. 27v



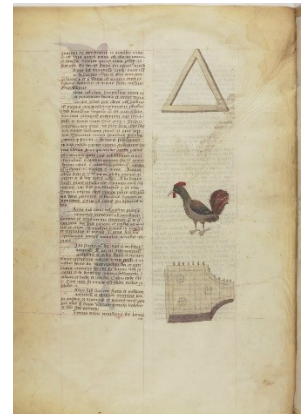
fol. 28r



fol. 28v



fol. 30r



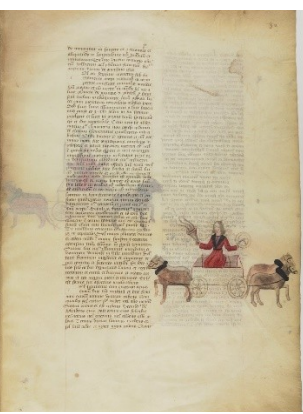
fol. 30v



fol. 31r



fol. 31v

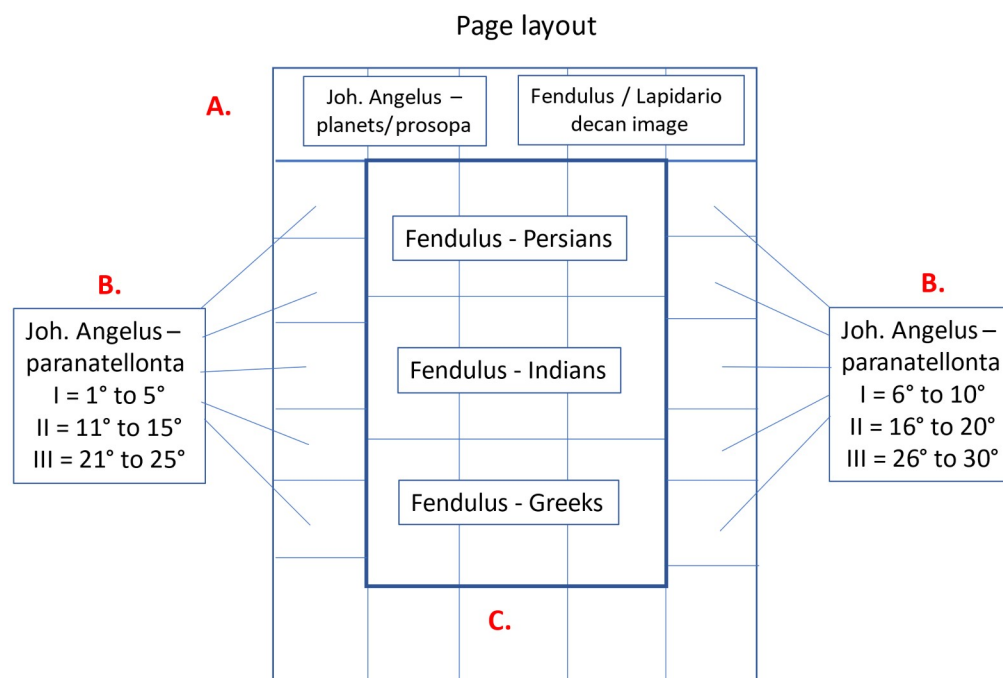


fol. 32r



fol. 32v

Understanding the structure of the decan pages:



A. The top zone contains:

left: images of the qualities or *prosopa* ('mask') of the planet-god ruling this decan. These images have been taken from Johannes Angelus, *Astrolabium planum* (1488 edn.)

right: talismanic images connected to each decan, which closely resemble those that appear in the *Segundo lapidario* and the *Picatrix latinus*, and often have some overlap with the 'Indian' decan-images in the *Liber astrologiae* of Fendulus.

B. The two side panels contain images 10 images (5 on the right and 5 on the left). They record the qualities of the paranatellonta of each degree of the sign. Each folio contains the 10 paranatellonta images that appear with the 10° of that decan – *i.e.*: 1°-10° with the first decan, 11°-20° with the second decan and 21°-30° with the third decan. These have been taken from Johannes Angelus, *Astrolabium planum* (1488 edn.)

C. The three zones in the central panel reproduce the paranatellonta according to the Persians, Indians and Greek, according to the *Liber astrologiae* of Georgius Zothorus Zaporus Fendulus.

For comparative images of the top zone and the central section with its related sources, see the relevant pages on this website: Illustrations/ Decans and Paranatellonta/ Comparative Images.

fol. 1v Aquarius Decan I (for detailed descriptions of the contents, see the relevant sections describing the Fendulus, Johannes Angelus, Ludovicus de Angulo, *Picatrix* and *Segundo Lapidario* manuscript).

- fol. 2r Aquarius Decan II
- fol. 2v Aquarius Decan III
- fol. 3v *DRACO INTER ARCTOS* with the **DRACO** shaped like an ‘S’ and placed horizontally on the page with its head towards the left. He is green, blue and yellow and has a dragon’s head, pointed teeth, small round ears and his tongue is sticking out. The Bears are grey-brown and placed back-to back, facing in opposite directions and both facing into the curves of Draco. **URSA MAIOR** is larger and closer to the head of Draco. **URSA MINOR** is smaller and stands on the tail of Draco.
- fol. 4r **HERCULES** is nude apart from some reddish fabric wrapped around his hips. He stands to the right, prising open the jaws of a lion who rises on his hindquarters in front of him (after the conventional formula found on antique gems). Hercules also has a blue cloth tied around his head.
- CORONA BOREALIS** is a meatal crown with red and blue gems.
- OPHIUCHUS** is nude and stands facing the viewer, slightly to the left. He holds his hands out to either side, with his arms bent at the elbows. The grey **SERPENS** is wound about him in a series of loops: rising over his right forearm, then behind his upper torso, curling once around his hips, then in front of his left forearm, before ending at the right side. The Snake’s head is to the left side and he looks at the man. Ophiuchus stands on **SCORPIO**, which faces to the left. It has 5 legs on the lower side and 4 on the upper side and a fish-hook tail.
- fol. 4v **BOOTES** is a farmer standing to the left. He wears a loose, red *exomis* that exposes his left breast and is belted at the waist. He holds a sickle raised in his right hand at which he looks. He holds a long stick vertically in his left hand.
- AURIGA** is a man sitting in a two-wheeled wooden cart that is being pulled to the right by two horses and two oxen. He wears a short, close-fitting red tunic and holds a spear in his right hand and extends his left hand as if holding the reins, but there are no reins evident. He has a small animal that looks like a grey squirrel on his extended left hand.
- CEPHEUS** stands slightly to the right, wearing a pleated blue-grey tunic, with a belt at the waist at the waist. He has a red money-bag held at the waist. He wears a long, straight sword on his left hip.

CASSIOPEIA is a young woman with long blonde hair seated on a rectangular pink chest. She is nude to the waist, with a white shawl around her shoulders and a red skirt on her lower half and she holds her hands out to her sides with her elbows bent.

fol. 5v	Pisces Decan I
fol. 6r	Pisces Decan II
fol. 6v	Pisces Decan III
fol. 7v	Sagittarius Decan I
fol. 8r	Sagittarius Decan II
fol. 8v	Sagittarius Decan III
fol. 9v	Virgo Decan I
fol. 10r	Virgo Decan II
fol. 10v	Virgo Decan III
fol. 11v	Taurus Decan I
fol. 12r	Taurus Decan II
fol. 12v	Taurus Decan III
fol. 13v	Leo Decan I
fol. 14r	Leo Decan II
fol. 14v	Leo Decan III
fol. 15v	Cancer Decan I
fol. 15 bis r	Cancer Decan II

fol. 15 bis v	Cancer Decan III
fol. 16v	Scorpio Decan I
fol. 16 bis r	Scorpio Decan II
fol. 16 bis v	Scorpio Decan III
fol. 17v	Gemini Decan I
fol. 18r	Gemini Decan II
fol. 18v	Gemini Decan III
fol. 19v	Capricorn Decan I
fol. 20r	Capricorn Decan II
fol. 20v	Capricorn Decan III
fol. 25r	VEXILLIUM is a red flag with two pennants, attached to a spear. There is also a unadorned spear set parallel to it.
fol. 25v	Saturn is depicted as a knight in armour with yellow decorative details. He carries a round shield that covers his left arm and raises a sickle with his left hand. He wears a straight sword on his belt.
fol. 27r	ERIDANUS (Pulsantis canonem) is depicted as a troubadour dressed in a long red robe. He is seated in a square cart and holds a psaltery in front of his chest. DELPHINUS as a blue fish with red fins, gills and tail. It is swimming to the left. ORION is dressed in armour, with a red and white shield held in his right hand and covering his body. He stands slightly to the left and reasts a long, straight sword on his shoulders.
fol. 27v	CANIS MAIOR is a tan dog with long pointed ears and a long, thin tail. He runs to the left.

LEPUS is a brown hare and it lies to the right.

NAVIS is a full ship sailing to the right with its sails furled and its rudder centrally located on the stern.

fol. 28r **AUSTRONOTUS** leaps to the left and has a female top half and a white cow's bottom half. The two are joined by a scalloped band. She has short blonde hair and holds her hands out to the sides with her elbows bent. She has 4 pink dugs along her bovine belly.

GALAXIA is depicted as two angels flying away from each other with their wings held high above their heads. The one on the right, dressed in red, holds a small ring in its hands in front of it. The one on the left, dressed in yellows, has an open book under its hands.

fol. 28v **PISCIS AUSTRINUS** are two equal-sized blue fish with red gills, fins and tails,

ARA is depicted as a cylindrical pink and grey altar with flames coming from the top. The top rim is held by a winged angel on each side, dressed in pink and yellow, each of which emerges from a cluster of clouds.

fol. 30r **PEGASUS** is the front half of a grey horse with pink and red wings, facing to the left. His left front legs are bent at right angles and his mid-section is shrouded on clouds.

ANDROMEDA stands suspended by her raised arms between two trees. She has long grey hair and a red gown dress that it parted at the waist to reveal male genitalia.

PERSEUS is dressed in armour. He has no helmet and faces slightly to the left, while looking to the right. He holds a *harpe* in his right hand above and behind his head, so that the tip points downwards and he holds a curved red and yellow shield so that it covers the upper part of his left arm. He holds the bearded Demon's head by its hair in his lowered left hand.

fol. 30v **TRIANGULUM** is a gold equilateral triangle.

The **PLEIADES** (Glochea) are depicted as a brown cockerel with a red and brown tail and a with a red comb and wattle, walking to the left.

LYRA as a yellow, 'pig-nosed' psaltery lying on its side with three sounding holes.

- fol. 31r Jupiter is standing to the right in a long, red coat with fur trim, wearing a fur hat. He holds a bouquet of flowers in each hand.
- Mars, as an armed knight holding a lance vertically in his right hand, with a crossbow at his feet, a sword on his hip and red shield covering the left side of his body.
- Venus is as a young woman standing to the right in a long lavender dress. In her left hand, she holds a bouquet of flowers. She holds an unidentified object (piece of fruit) in her right hand.
- fol. 31v Mercury is dressed as a bishop in purple vestments. He holds a bouquet of flowers in his outstretched right hand and a book in his left. His mitre is floating to the right of his head.
- fol. 32r Sol is a young man sitting with outstretched hands in a square cart drawn by 4 horses of different colours. His head is surrounded by rays and he holds a torch in his right hand and a disc with T-O demarcations in his left hand.
- fol. 32v Luna is dressed in a red robe and stands in a square cart pulled by two horses and two oxen. She holds lit tapers in each hand and her head is surmounted by a crescent.

notes

410 -415 x 290-300 mm, i + 34 + i folia, parchment; written in French *bastarda* by one hand.

The iconography of the constellations follows that found in Ludovicus de Angulo's *De figura seu imagine mundi* and - by extension - the illustrations that appear in Michael Scot manuscripts, with a few notable exceptions, such as the classicising image of Hercules prising open the jaws of the Nemean Lion.

The provenance of the ms is unknown, beyond the fact that it was already in the Royal Library in 1744.

bibliography

Catalogus codicum manuscriptorum Bibliothecae Regiae 1744, p. 344.

GUNDEL 1936, p. 88.

PANOFSKY 1953, p. 106, note 3.

SAXL/MEIER 1953, p. 248.

THORNDIKE 1957, pp. 140f..

AURGEMMA 1976a, p. 221.

SCHADT 1982, p. 298, note 318.

GOUSSET/VERDET 1989, p. 101, fig. 32.

GARCIA AVILES 1995a, p. 41.

ŚNIEZYŃSKA-STOLOT 1997, pp. 9f., 92.

LIPPINCOTT 1993, p. 45, note 20.

Kristen LIPPINCOTT, 'Gli dei-decani del salone dei Mesi di Palazzo Schifanoia', in *Alla corte degli estensi. Filosofia, arte e culture a Ferrara nei secoli XV e XVI*, ed. M. Bertozzi, Ferrara: Università degli studi, 1994, pp. 183-197.

BLUME 2000, p. 269.

ŚNIEZYŃSKA-STOLOT 2002, *passim* and figs. 27, 37, 38, 48, 49, 59, 77, 87, 96-97, 114.

Dominique VANWIJNSBERGHE, '*Moult bons et notables*': *l'enluminure touraisienne à l'époque de Robert Campin (1380-1430)* [Corpus of Illuminated Manuscripts, Low Countries Series 12], Paris-Leuven-Dudley, MA, Uitgeverij Peeters, 2007, p. 220, no. 679.

David JUSTE, *Les manuscrits astrologiques latins conservés à la bibliothèque nationale de France* [Catalogus codicum astrologorum latinorum, 2], Paris : CNRS éditions, 2015, pp. 119-120.

BLUME/HAFFNER/METZGER 2016, II, 2, pp. 20, 173-826 (no. 6) and figs. 47-51.

Joëlle DUCOS, Christopher LUCKEN (dir.), *Richard de Fournival et les sciences au XIIIe siècle* [Micrologus Library, 88], Florence: SISMEL - Edizioni del Galluzzo, 2018, pp. 12n and 117. 2019

Agostino PARAVICINI BAGLIANI, *Les miscellanées scientifiques au Moyen Âge* [Micrologus, 27], Florence: Edizioni del Galluzzo, 2019, pp. 41 and 213.

The manuscript has been fully digitised at : <https://gallica.bnf.fr/ark:/12148/btv1b105160904>